

NightWatchman Management Center Quick Start Guide

This quick start guide provides a brief overview of the process for downloading and installing the NightWatchman Management Center.

Downloading the product and documentation

The NightWatchman Management Center consists of the NightWatchman Console, NightWatchman Reporting, the 1E WakeUp Server and the NightWatchman Clients and 1E WakeUp Agents. These products can be downloaded via the *NightWatchman Management Center* link on the [NightWatchman downloads](#) section of the 1E Website.

The product documentation provides detailed information on installing and configuring NightWatchman Management Center. These can be downloaded via the Solution Documentation link on the [NightWatchman downloads](#) section of the 1E Website.

In the rest of this guide we provide an overview of the installation steps for installing the NightWatchman Management Center in a default installation where the core components are placed on a single server.

Requirements for the NightWatchman Management Center

The following table shows the complete set of requirements needed to install the NightWatchman Management Center core components onto a single server.

NightWatchman Management Center Single Installation Requirements	
These are the requirements for installing all the components of NightWatchman Management Center onto a single server.	OS Requirements
	<ul style="list-style-type: none"> Windows Server 2003 Windows Server 2008
	Note: the NightWatchman Management Center is not supported on servers configured as Domain Controllers
	Prerequisites
	<ul style="list-style-type: none"> SQL 2005 SP2 or SQL 2008 SQL must be configured to use Case Insensitive, Accent Insensitive (CI_AI) collation IIS 6 or above IIS Windows Authentication .NET Framework 2.0 SP1 (required for the report console and web service websites, must be installed in addition to .NET Framework 3.5 SP1) .NET Framework 3.5 SP1
	Accounts needed during installation
	<ul style="list-style-type: none"> NightWatchman Service account. This should be a domain account
	Installation account permissions
<ul style="list-style-type: none"> Domain user account with local administration permissions Sysadmin on target database 	

The complete list of individual component requirements and details on split installations can be found in the NightWatchman Management Center installation guide.

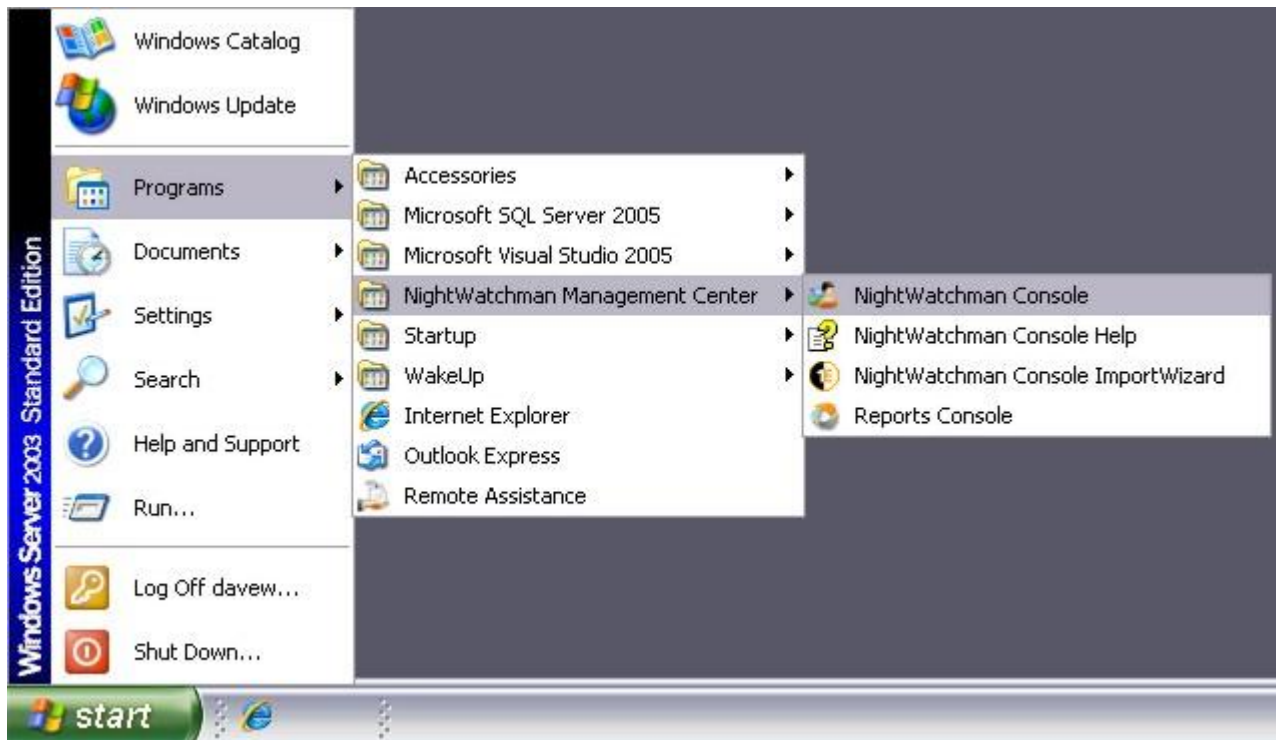
Installing the NightWatchman Management Center

Here we describe the recommended order for a default installation of the NightWatchman Management Center Components and related products:

1. Install the NightWatchman Management Center by running the *NightWatchmanManagementCenter.msi* provided in the NightWatchman Management Center zip file, as described in *Section 3 Installing* on page 11 of the of the *NightWatchman Management Center Installation Guide*
2. Install the 1E WakeUp Server(s), using *WakeUpSrv.msi*, selecting to register one 1E WakeUp Server as the NightWatchman Management Center WakeUp Provider, as described in *Section 4 Installing 1E WakeUp* on page 17 of the *1E WakeUp Installation Guide*
3. When configuring integration with 1E WakeUp add the WMI permissions to the Console Service account as described under the heading *Console Service Component Requirements* on page 9 of the *NightWatchman Management Center Installation Guide*
4. After installing the 1E WakeUp Server restart the NightWatchman Management Center Console Service to finish the registration as the NightWatchman Management Center WakeUp Provider, as described in heading *B.2 Restarting the Console Service* on page 31 of the *NightWatchman Management Center Installation guide*
5. Install the NightWatchman Clients and 1E WakeUp Agents, as described in the *NightWatchman Installation Guide* and *1E WakeUp Installation Guide*

Running the product for the first time

Centralized management of computer wakeups and shutdowns, and application of Power Policies to computers in your network is provided by the NightWatchman Console. After installation the NightWatchman Console will be available from the *Start Menu* item, as shown in the following picture:



The NightWatchman Console Help file

In this location you can also find the *NightWatchman Console Help* file which provides detailed information on how to use and configure the NightWatchman Console.

The NightWatchman Console

When running the console you will need to wait for a certain period of time before computers with the NightWatchman Clients and 1E WakeUp Agents running appear - this depends on the environment size chosen during installation of the NightWatchman Management Center core components. The larger the environment chosen the longer it takes for the information to filter through from the NightWatchman Clients and 1E WakeUp Agents to the NightWatchman Management Center and appear in the NightWatchman Console.

When they are reported back by the NightWatchman Clients and 1E WakeUp Agents, the computers will initially appear in the UNASSIGNED BUILDING and UNASSIGNED DEPARTMENT nodes in the console, as shown in the following picture:



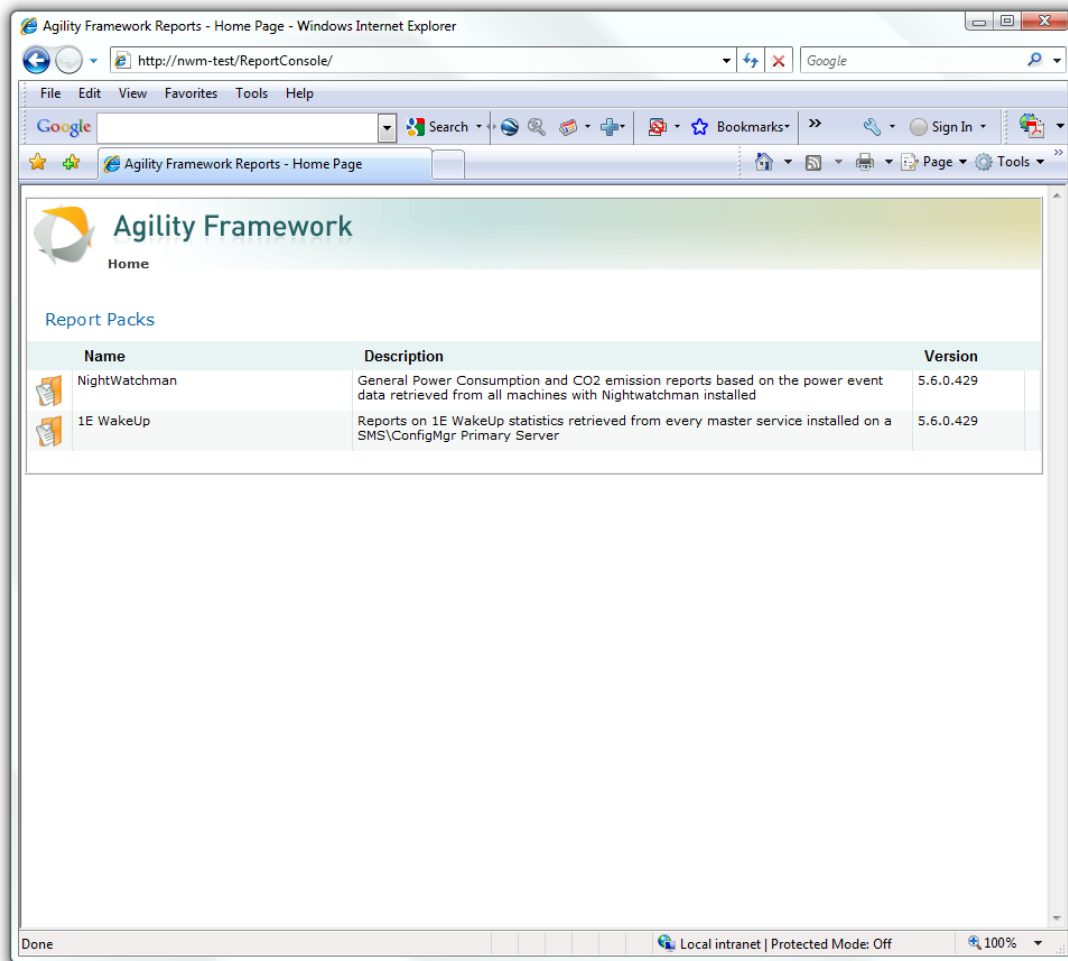
For further details on how to use the NightWatchman Console to manage NightWatchman control see the NightWatchman Console Help.

The NightWatchman Console ImportWizard

You can create location and organization groups and once computers appear in the console assign them to the groups you have created. You can also run the *NightWatchman Console ImportWizard* to help automatically place discovered computers into the groups of your choosing, though you will have to prepare the groundwork first, as described in the *NightWatchman Console Help* file

Viewing Reports

The NightWatchman Management Center Start Menu item also contains a link to the Reports Console where you can view the power consumption and computer health reports based on data provided by the NightWatchman Clients and 1E WakeUp Agents. The Report Console is shown in the following picture:



You will have to have been running the system for a number of days to get enough information to make up a valid report. Details on the reports that you can view are provided in the *NightWatchman Management Center Reporting Guide*.

In conclusion

This concludes the brief overview of installing and running the NightWatchman Management Center for the first time. For extended information on configuring the NightWatchman Management Center and associated products please refer to the documents listed below.

NightWatchman Management Center Documentation

- The NightWatchman Management Center Installation Guide.pdf
- The NightWatchman Management Center Reporting Guide.pdf

NightWatchman Client Documentation

- The NightWatchman Administrators Guide.pdf
- The NightWatchman Installation Guide.pdf
- The NightWatchman Scripting Reference.pdf

- The NightWatchman User Guide.pdf

1E WakeUp Server and 1E WakeUp Agent Documentation

- The 1E WakeUp Installation Guide.pdf
- The 1E WakeUp Administrators Guide.pdf

Contacting 1E

The essential resource for information about 1E and its products is the website.

<http://www.1e.com/>

To contact the sales department at 1E you can use the following email address:

<mailto:sales@1e.com>