



Hawaii Green IT

## The NightWatchman Administrator's Guide

*A unique power management solution. Save energy, the environment and money*

## The NightWatchman Administrator's Guide

Version 5.6 document revision 3

© 1E Ltd 2009

All rights reserved. No part of this document or of the software ("the software") to which it relates shall be reproduced, adapted, stored in a retrieval system, or transmitted by any means, electronic, mechanical, photocopying, recording, or otherwise, without permission from 1E Ltd. It is the responsibility of the user to use the software in accordance with this document and 1E Ltd shall not be responsible if the user fails to do so. Although every precaution has been taken in the preparation of this document, 1E Ltd and the authors assume no responsibility for errors or omissions, nor shall they be liable for damages resulting from any information in it.

### Trade marks

1E is a trade mark of 1E Ltd registered in the UK[, EU and US], with registration applied for in Australia. The 1E device is a trade mark of 1E Ltd registered in the UK and EU, with registration applied for in the US and Australia. NIGHTWATCHMAN is a trade mark of 1E Ltd registered in the US, with registration applied for in the EU and Australia. MICROSOFT, WINDOWS NT, WINDOWS 2000, WINDOWS XP are all trademarks of Microsoft Corporation in the United States and other countries.

### SHA-2 Algorithm

Copyright (c) 2002, Dr Brian Gladman, Worcester, UK. All rights reserved.

### LICENSE TERMS

The free distribution and use of this software in both source and binary form is allowed (with or without changes) provided that:

1. distributions of this source code include the above copyright notice, this list of conditions and the following disclaimer;
2. distributions in binary form include the above copyright notice, this list of conditions and the following disclaimer in the documentation and/or other associated materials;
3. the copyright holder's name is not used to endorse products built using this software without specific written permission.

ALTERNATIVELY, provided that this notice is retained in full, this product may be distributed under the terms of the GNU General Public License (GPL), in which case the provisions of the GPL apply INSTEAD OF those given above.

### DISCLAIMER

This software is provided 'as is' with no explicit or implied warranties in respect of its properties, including, but not limited to, correctness and/or fitness for purpose.

## Contents

<b>Section 1</b>	<b>Introduction</b>	<b>1</b>
1.1	What will NightWatchman do for me? .....	1
1.2	New in NightWatchman 5.5.....	1
1.3	The NightWatchman Console.....	2
1.4	Conventions used in this guide .....	2
	Cross references .....	2
	Notes .....	2
	Code fragments and command-lines .....	2
1.5	Who is this guide for? .....	2
1.6	Requirements .....	2
<b>Section 2</b>	<b>What is NightWatchman?</b>	<b>3</b>
2.1	The key features of NightWatchman.....	3
2.2	How does NightWatchman operate? .....	3
	NightWatchman administration.....	3
	Scheduled/requested shutdowns.....	3
	Log-off actions.....	4
	Controlling NightWatchman behaviour during a scheduled sequence .....	4
	Shutdown scripts.....	4
	The NightWatchman power scheme.....	4
	Capabilities of end-users .....	5
<b>Section 3</b>	<b>Configuring NightWatchman</b>	<b>6</b>
3.1	Hibernate, Standby or Normal .....	6
3.2	Configuring common NightWatchman scenarios .....	7
	Shut down all PCs in the evening .....	7
	Shut down PCs on certain days of the week.....	7
	Use NightWatchman to save documents when a laptop PC is running out of power.....	8
	Log-off users in a secure environment .....	11
	Configuring company-wide power schemes .....	11
	Close all applications prior to software distribution .....	12
	Shutting down a PC remotely using NightWatchman .....	12
3.3	Configuring NightWatchman shutdown scripts .....	12
	Writing NightWatchman shutdown scripts .....	12
<b>Section 4</b>	<b>Sleepless Client Detection</b>	<b>13</b>
4.1	The Sleepless Client Detection reports.....	13
4.2	Enabling advanced sleepless detection.....	13
4.3	The sleepless exclusion list .....	14
	NightWatchman Console.....	14
	NightWatchman client command-line.....	14
4.4	Sleepless exclusion at the point of entering a sleep state.....	14
<b>Section 5</b>	<b>Alarm Clocks and Maintenance Windows</b>	<b>15</b>

5.1	Alarm Clocks .....	15
	Configuring an Alarm Clock on the NightWatchman command-line.....	15
	Configuring an Alarm Clock using the NightWatchman Console.....	15
	Keeping a computer awake after an alarm clock.....	15
5.2	Maintenance Windows.....	15
	Configuring Maintenance Windows on the NightWatchman command-line .....	16
	Configuring Maintenance Windows using the NightWatchman Console .....	16
<b>Section 6 The NightWatchman Command-line Reference</b>		<b>17</b>
6.1	The NightWatchman command line switch syntax.....	17
6.2	NightWatchman command line switches by category .....	17
	NightWatchman service switches .....	17
	NightWatchman executable information switches .....	18
	Main functionality switches .....	18
	Power policy switches .....	19
	Power scheme switches.....	19
	Process exception list switches .....	19
	Sleepless detection switches .....	19
	Alarm clock and maintenance window switches.....	20
	Reporting and Policy switches .....	20
	Log file switches.....	21
6.3	NightWatchman alphabetic switch reference .....	22
	acturnonmonitor .....	22
	advancedsleeplessdetection .....	22
	alarmclock .....	22
	autorestart.....	22
	countdownsecs .....	22
	debug.....	22
	diskac.....	22
	diskdc.....	23
	help .....	23
	hibernateac .....	23
	hibernatedc .....	23
	hibernatenow.....	23
	ignoreerrors .....	23
	logfilename .....	23
	logoffaction .....	24
	maintenancewnd .....	24
	maxbatchsendintervalsecs .....	24
	maximumfileagesecs.....	24
	maxlogfilesize.....	25
	minmessagesperbatch .....	25

monitorac .....	25
monitordc .....	25
monitorjobs .....	25
mwturionmonitor .....	25
onceoff .....	25
passwordonwakeup .....	26
pelistadd .....	26
pelistclear .....	26
pelistdel .....	26
pelistfrom .....	26
pelistshow .....	26
pendingjobwindowmins .....	26
polycertissuer .....	27
polycertsubject .....	27
polycyserverurl .....	27
pollintervalmins .....	28
pollintervalsecs .....	28
pollretryintervalmins .....	28
powerscheme .....	28
relicense .....	28
reporting .....	29
reportingcertissuer .....	29
reportingcertsubject .....	29
reportingserver .....	29
reportingserverurl .....	29
retryattempts .....	29
retryinterval .....	30
runalways .....	30
runscriptseverylogoff .....	30
scripttimeoutsecs .....	30
securepolycyserverurl .....	30
securereportingserverurl .....	30
selistadd .....	31
selistclear .....	31
selistdel .....	31
selistfrom .....	31
selistshow .....	31
settings .....	31
shutdownaction .....	32
shutdowndays .....	32
shutdownmsg .....	32

shutdownnow .....	33
shutdownonce .....	33
shutdowntime.....	33
spoolerdirectory .....	34
standbyac .....	34
standbydc .....	34
standbynow.....	34
start.....	34
stop .....	34
summary .....	34
systemtray.....	34
useractivitymaxidlemins .....	34
version .....	35
waitminutesforunavailableserver.....	35
<b>Section 7 The end-user interface</b>	<b>36</b>
7.1 The NightWatchman system tray icon.....	36
7.2 NightWatchman backups are present .....	36
7.3 The NightWatchman system tray menu .....	36
7.4 Keep Active .....	37
The NightWatchman Keep Active dialog .....	37
7.5 Shutdown Now.....	38
7.6 View Backup List .....	38
Backups of new or previously saved files.....	39
Backup information .....	40
Working with NightWatchman backups .....	41
7.7 View User Log.....	41
7.8 About NightWatchman .....	42
<b>Section 8 Beyond The NightWatchman Administrator's Guide</b>	<b>43</b>
8.1 How does NightWatchman work with ConfigMgr and 1E WakeUp?.....	43
<b>Section 9 Troubleshooting</b>	<b>45</b>
9.1 Checking the problem .....	45
9.2 Contact 1E Technical Support.....	45
Creating a technical report.....	45
<b>Section 10 Further Information</b>	<b>46</b>
10.1 Contact details.....	46
1E web support.....	46
Telephone and fax.....	46
Post .....	46
Sales.....	46
Technical support.....	46
<b>Appendix A Glossary</b>	<b>47</b>

A.1	Technical Terms .....	47
<b>Appendix B NightWatchman Global Policies</b>		<b>48</b>
B.1	Importing the NightWatchman Group Policy Template.....	48

## Section 1 Introduction

*A unique power management solution. Save energy, the environment and money*

NightWatchman® is one of a range of management products available from 1E. It saves money and effort by coordinating power management into a company-wide strategy.

This guide will help you to configure NightWatchman to cover the most widely used scenarios. For complex configurations you can also contact 1E to get the best solution.

### 1.1 What will NightWatchman do for me?

The main purpose of NightWatchman is to shut down machines or put them into a sleep state. It also provides the following features:

- **Save energy, save the environment and save money** - NightWatchman saves you money by automatically shutting down machines when they are not in use. Shutdowns can proceed painlessly, ensuring that current work and data are kept safe.
- **Shut down machines automatically and safely** - NightWatchman enables PCs to be automatically shut down according to a defined schedule. At the same time open files are saved using the scripts provided with NightWatchman. This means that PCs can be shut down without data loss, an essential part of any automatic PC power management system.
- **Increase security** - NightWatchman also enhances the security of your network, reducing the danger of uncontrolled network wide access and the window of opportunity for viruses to spread out of office hours. Also if your PCs are off there is less possibility of electrical failure and fire.
- **Coordinate power management policies** - NightWatchman makes the lives of your IT staff easier, enabling the easy management of each user's power management settings and corresponding internal policies on PC power consumption from a central location.

### 1.2 New in NightWatchman 5.5

NightWatchman has been enhanced to provide: sleepless client detection to help machines go into a sleep state, alarm clocks and maintenance windows to allow computers to be brought out of a sleep state and a new "keep active" end-user feature that allows the user to prevent shutdown for a selected time. These are described in more detail below:

- **Sleepless Client Detection** - NightWatchman can now detect why a particular computer is not going into a sleep state and enable you to bypass the cause to allow even more power savings. Certain application interactions with the Operating System have the unnecessary side effect of keeping computers from going into a sleep state, even though the user has not been active on the computer. NightWatchman can detect the processes that keep a computer awake and lets you bypass them to allow the computer to go into a sleep state.

For more information on this feature see *Section 4 - Sleepless Client Detection*.

- **Alarm Clocks and Maintenance Windows** - NightWatchman now lets you define maintenance windows whereby machines will be brought out of a sleep state for a configurable maintenance period and then returned to a sleep state afterwards. When configured from the NightWatchman Console and combined with 1E WakeUp you can even power up computers from an off state.

For more information on this feature see *Section 5 - Alarm Clocks and Maintenance Windows*.

- **Keep Active** - NightWatchman now lets end users inhibit passive or active NightWatchman shutdowns for a selectable period of time. The functionality empowers the end user to choose to opt out of scheduled events so that they can run a batch processing job overnight for example.

For more information on this feature see heading *7.4 - Keep Active*.

### 1.3 The NightWatchman Console

The NightWatchman Console combined with NightWatchman and 1E WakeUp for Agility Framework Reporting provides a powerful combination that enables the power state for machines to be fully controlled and scheduled from a centrally managed console. So, on the one hand, financial directors and facilities management can control general PC power consumption with minimal disruption to staff. On the other hand, systems administrators can ensure that PCs are on, and in a fresh “restarted” state, for scheduled out-of-office-hours maintenance windows.

### 1.4 Conventions used in this guide

This section shows how to interpret the different styles used in this document to denote various types of information.

#### Cross references

Cross references are shown in italics. Cross references may be to diagrams or tables in the current document or to other documents. For example, the following paragraph references another document in the NightWatchman set:

After reading this administration guide, you can get more detailed information in *The NightWatchman Scripting Reference*.

#### Notes

Notes are shown in white on an orange background. For example, the following note provides some useful information:

**Note: always pay attention to notes.**

#### Code fragments and command-lines

This manual uses *Lucida Console* typeface plus a shaded background to denote code fragments and command-lines. For example, the following shows a NightWatchman installer command-line, and a note:

```
C>msiexec /i Nightwatchman50.msi LOGOFFACTION=ACTIVE SHUTDOWN_HOUR=20  
SHUTDOWN_MIN=30 PIDKEY=ABCD-1234-5678-8765-4321 /qn
```

**NOTE: the text “ABCD-1234-5678-8675-4321” in the above example should be replaced with the NightWatchman license key you got from the 1E sales department.**

### 1.5 Who is this guide for?

This administration guide is aimed at systems administrators who intend to implement the NightWatchman power management solution. It provides details on configuring NightWatchman from the command line, introductory information on writing scripts and information that can be presented to the end-users on how to use the simple NightWatchman user interface.

### 1.6 Requirements

Please refer to the *Section 2 Requirements* in the *NightWatchman Installation Guide* for detailed requirements for NightWatchman.

## Section 2 What is NightWatchman?

NightWatchman is designed to ensure that systems are shut down or logged off in a consistent manner enabling administrators to take over this responsibility from the user. Using NightWatchman it is possible to achieve 100% known state of all workstations. This assists in desktop management, software delivery and energy saving; enabling systems to be powered off when not in use.

The key advantage of using NightWatchman over other methods of remotely shutting down PCs is its ability to save open documents, thereby ensuring that no data is lost in the process.

### 2.1 The key features of NightWatchman

NightWatchman is an easily installable Windows Vista/XP lightweight client service. The main features of the installed NightWatchman service can be summarised as follows:

- Shut down or log off systems at a preset time each day (or selected days). See the common NightWatchman scenario *Shut down PCs on certain days of the week* for more details.
- Save user data during a NightWatchman scheduled shutdown.
- Prevent NightWatchman shutdowns when selected processes are running. See *Table 7 - The NightWatchman process exception list switches* for more details.
- Easy to configure using most Systems Management tools. See *Section 6 - The NightWatchman Command-line Reference*.
- Report on power settings and calculate savings. See *Table 10 - The NightWatchman Reporting switches* and *The NightWatchman Reporting Guide* for more details.
- Request an immediate shutdown, hibernate or standby for emergencies, see the *shutdownnow*, *hibernatenow* and *standbynow* command line switch descriptions.
- Enforce custom power schemes. See *Power scheme switches* under heading 6.2 *NightWatchman command line switches by category*.
- Enforce user log-off/shutdown in secure environments. See *Log-off users in a secure environment* under heading 3.2 *Configuring common NightWatchman scenarios*.
- One-off customised shutdown at a specified time, see the *onceoff* command line switch description.
- Can be tailored to suit a particular application environment using Windows Scripting Host scripts (VBScript, JScript). These are used in order to manipulate and/or close active applications prior to log-off. See heading 3.3 *Configuring NightWatchman shutdown scripts*.

### 2.2 How does NightWatchman operate?

There are two main participants in the day-to-day use of NightWatchman: the administrator, responsible for determining the power management policy, and the end-user, using the machine that is controlled by the policy.

#### NightWatchman administration

In broad terms there are four key areas that require administration; these areas roughly correspond to the order taken during the operation of NightWatchman.

- Scheduling shutdowns
- Defining the actions taken to log-off a user
- Creating or modifying any shutdown scripts needed in addition to the base set
- Setting the actions taken to power-off the machine

#### Scheduled/requested shutdowns

The administrator can schedule the system to shut down at a certain time on certain days of the week. The administrator and end-user can also request an immediate shutdown.

If there is a user logged onto the system when a shutdown is started, the log-off action takes place. If not, NightWatchman will proceed directly to the power-off stage.

**Note: if a computer is already in standby or hibernate it will not be woken to shut it down.**

### Log-off actions

There are three log-off modes that can be set:

- *Passive* - in this mode, if a user is logged on no attempt will be made to shut down
- *Active* - in this mode users are asked if the shutdown is allowed to continue
- *Force* - in this mode users are notified that a shutdown is about to take place, they will then be logged off once the countdown has expired.

The administrator can set a countdown for a shutdown, so in *Active* and *Force* modes the user is presented with a countdown to the shutdown. In *Active* mode the user has the option of cancelling the shutdown; otherwise they can click on *OK* or allow the countdown to expire to allow the shutdown to take place. If the user postpones the shutdown, NightWatchman can be set to retry again later.

If the modes are *Active* or *Force*, NightWatchman will then attempt to execute the shutdown scripts.

### Controlling NightWatchman behaviour during a scheduled sequence

At the start of a scheduled NightWatchman shutdown, hibernate or standby sequence, NightWatchman runs a script called *PRERUN.VBS*. This script enables the NightWatchman greater control over whether the scheduled sequence should continue or not.

- If the pre-flight check fails then the scheduled sequence is automatically postponed and will retry after the standard period governed by the NightWatchman *retryinterval* setting.
- If the pre-flight check succeeds and the NightWatchman shutdown action is Standby or Hibernate then the machine will be put into one of these states.
- If the pre-flight check succeeds and the NightWatchman shutdown action is normal, reboot or logoff then the process exception list is checked. If any of the processes in the exception list are currently running then the scheduled sequence will be aborted.

During NightWatchman installation a default *PRERUN.VBS* script is created that explicitly performs no action and only returns a success code. The script is commented to enable the functionality to be customised easily.

### Shutdown scripts

If a user is logged onto the system and a shutdown proceeds, an attempt will be made to save all the currently open and edited documents. This is implemented using shutdown scripts - there must be a shutdown script for each application that was open. If a given application has no corresponding script and contains unsaved data then NightWatchman will abort the shutdown.

If the log-off action was *Active* then the shutdown scripts must all succeed before power-off takes place. If the log-off action was *Force* then the system will be powered off regardless of whether the shutdown scripts were completely successful or not.

More details on scripting NightWatchman is provided in *Section 4.2 Configuring NightWatchman shutdown scripts on Page 12*, and *The NightWatchman Scripting Guide*.

### The NightWatchman power scheme

If you specify that NightWatchman should enforce a Windows power scheme, NightWatchman automatically configures the power scheme, for machines using Intel speed step processors or AMD Cool n' Quiet processors, to allow the processor speed and voltage to vary automatically with system usage. This results in enhanced energy saving on machines with low average utilization (most office productivity machines). On Windows Vista this involves the creation of a new NightWatchman power scheme based on the Balanced Power Scheme. On Windows XP, the NightWatchman power scheme enables adaptive processor throttling for processors that are capable of making use of the feature..

**Capabilities of end-users**

When the administrator has enabled the NightWatchman system tray interface, the end-user will be able to perform the following actions:

- Keep their computer active by opting out of passive or active NightWatchman shutdowns for a selectable period of time
- Initiate a local shutdown
- View the list of files backed-up during the last log-off process

The user documentation for the simple interface available to the end-user is provided in *Section 6 The end-user interface* on *Page 36*.

## Section 3 Configuring NightWatchman

This section shows how to configure NightWatchman to deal with some common scenarios and how to generally modify the NightWatchman scripts. The complete set of NightWatchman flags are detailed in *Section 5 - The NightWatchman Command-line Reference on Page 17*.

### 3.1 Hibernate, Standby or Normal

There is some debate about which NightWatchman *shutdownaction* setting to use, *hibernate*, *standby* or *normal* (shut down and power off), it is best to leave computers in when they are not in use. This is largely a matter for personal preference, depending on the impact on the user and the type of hardware and software being used. The following table discusses some pros and cons for the three types.

**Table 1 - Hibernate, standby and normal pros and cons**

shutdownaction	Pros	Cons
Hibernate	<ul style="list-style-type: none"> <li>• Is able to work on an idle timer</li> <li>• Less intrusive to the end user</li> <li>• Relatively quick to go into sleep (writing to disk) and resume (slower because disk is read into memory)</li> <li>• Applications and open files are kept open but stored to disk and therefore immune to power failures</li> </ul>	<ul style="list-style-type: none"> <li>• Will lose any open connections</li> <li>• Some 3<sup>rd</sup> party applications may lose data or fail on resumption when remote connections are used</li> <li>• Some hardware refuses either to sleep or wake up again afterwards</li> <li>• With Windows XP in conjunction with older hardware there generally are more issues</li> <li>• Over time the OS memory footprint will grow and the machine will become slower</li> </ul>
Standby	<ul style="list-style-type: none"> <li>• Is able to work on an idle timer</li> <li>• Less intrusive to the end user</li> <li>• Quick to go into sleep and resume, depending on the computer</li> <li>• Applications and open files are kept open</li> <li>• Machines can wake themselves on a timer</li> </ul>	<ul style="list-style-type: none"> <li>• Will lose any open connections</li> <li>• Some 3<sup>rd</sup> party applications may lose data or fail on resumption when remote connections are used</li> <li>• Open files will not be saved if the machine runs out of power during sleep - specifically for Windows XP desktop computers as Windows Vista uses hybrid sleep and laptops will wake to hibernate the machine when battery power is low</li> <li>• Some hardware refuses either to sleep or wake up again afterwards</li> <li>• With Windows XP in conjunction with older hardware there generally are more issues</li> <li>• Over time the OS memory footprint will grow and the machine will become slower</li> </ul>
Normal	<ul style="list-style-type: none"> <li>• Computer is always in a known state. It will either be on or off</li> <li>• Always running a fresh memory structure on startup</li> <li>• Will refresh connections on</li> </ul>	<ul style="list-style-type: none"> <li>• Requires that Wake On LAN is configured and working to enable out of hours patching</li> <li>• Takes the longest time of the three modes to be in a running state</li> </ul>

	<p>startup</p> <ul style="list-style-type: none"> <li>• Ensures that open documents are saved on shutdown</li> <li>• Helps in the scenario where patching requires a restart of the OS</li> <li>• Safest from power issues</li> </ul>	<ul style="list-style-type: none"> <li>• A script is needed for every application that may be running on the machine at the point of shutdown</li> <li>• Shutdowns can only set for a specific time, they cannot be triggered by an idle timer</li> </ul>
--	---	---

### 3.2 Configuring common NightWatchman scenarios

This section shows how NightWatchman can be configured to cover some common power management and security policies. The example NightWatchman command-lines will need to be run on each PC.

#### Shut down all PCs in the evening

This is probably the most common use for NightWatchman. Powering off PCs is the best way of saving energy, and it also ensures that they have a clean start each day. NightWatchman ensures that as many systems as possible are shut down, executing scripts to make sure that any active applications that have been left running are closed in a timely fashion.

```
nightwatchman.exe -shutdowntime=20:30
```

Using SMS/ConfigMgr, or a similar System Management tool, you can broadcast the above command-line to all the PCs in your network. Groups of systems can be configured in this way to shut down at different times.

In the following extended example scenario, the policy is to initiate a shutdown at 8:30 PM, prompt the user that shutdown is going to take place and provide them with a 5 minute countdown to allow for the fact that they might be away from their desks. The policy will also allow users to defer the shutdown for half an hour by cancelling the shutdown from the dialog. The policy will be to try and shut down every half an hour - twenty times to catch the moment when late night users have finally left their PCs.

To configure this scenario you need to set the following switches; some are set to their default values, but are included for clarity:

```
nightwatchman.exe -shutdowntime=20:30 -logoffaction=active
-shutdownaction=normal -countdownsecs=300 -retryinterval=30
-retryattempts=20
```

**Note: The above example could have also been entered one switch at a time on separate command lines. You can choose whichever format is most convenient.**

#### Shut down PCs on certain days of the week

This is done using the *shutdowndays* command-line switch. The following command sets the scheduler to run on Tuesday, Wednesday and Friday only:

```
nightwatchman.exe -shutdowndays=2,3,5
```

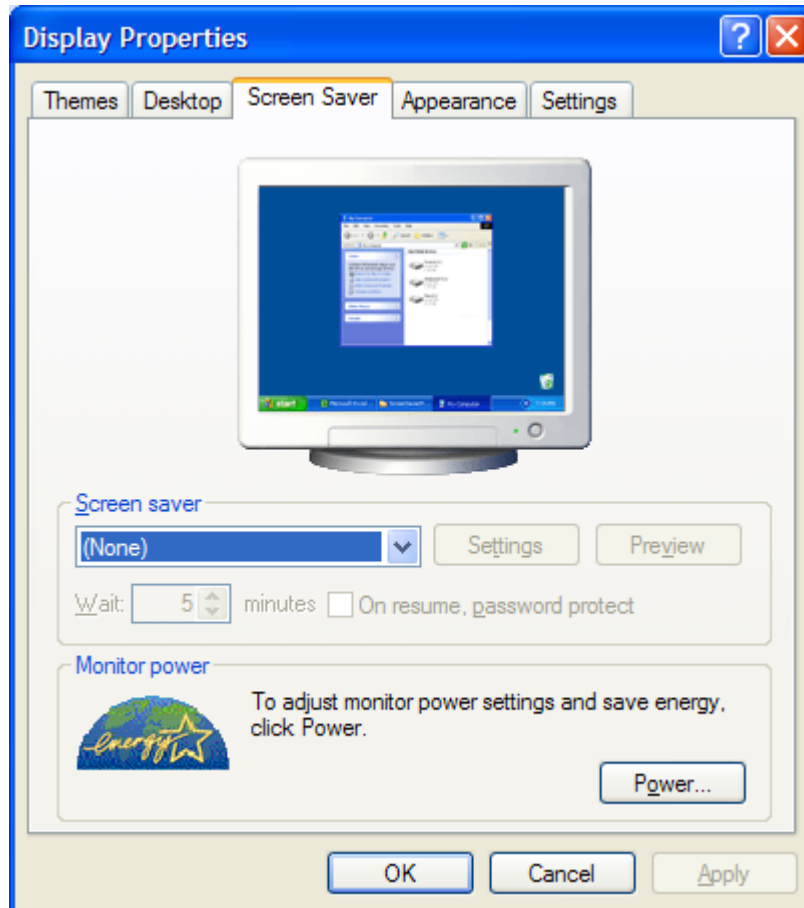
The following command sets the scheduler to run each day from Monday until Friday.

```
nightwatchman.exe -shutdowndays=1-5
```

**Use NightWatchman to save documents when a laptop PC is running out of power**

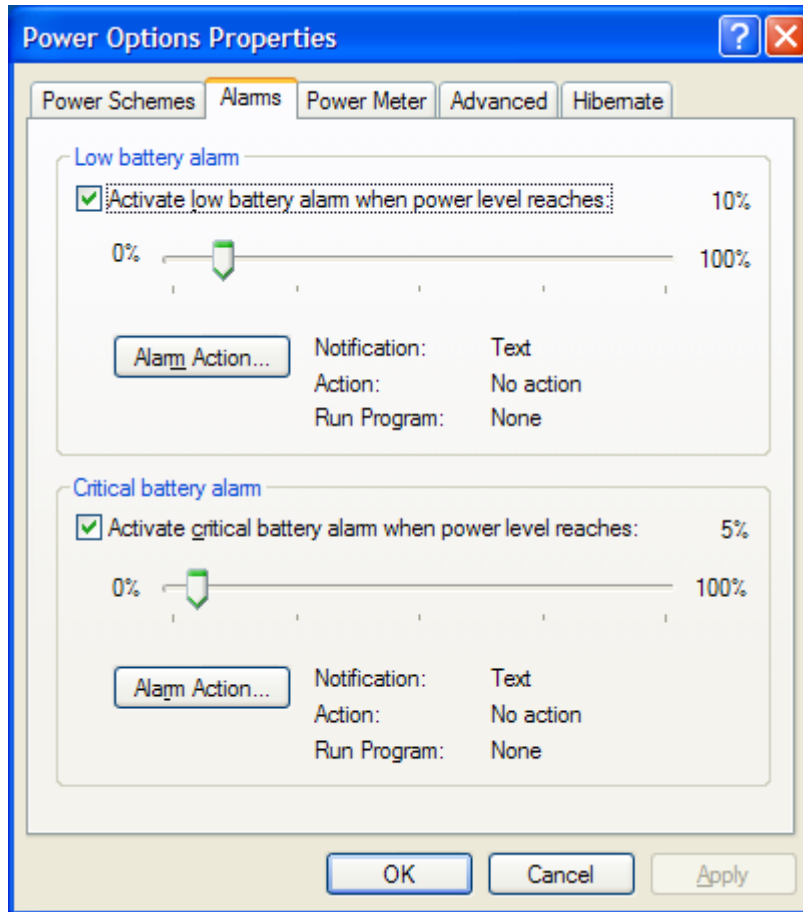
Windows XP enables you to specify a program to run when a laptop PC reaches a critical battery power threshold. You can set NightWatchman as the program to be used to allow documents to be saved and the laptop to be shut down safely. The instructions below show how this can be configured in Windows XP:

1. Select the Windows *Display Properties* dialog, by right-clicking on the Windows desktop and selecting the *Properties* item. Then click on the *Screen Saver* tab, as shown in *Figure 1*.

**Figure 1 - Adjusting power settings**

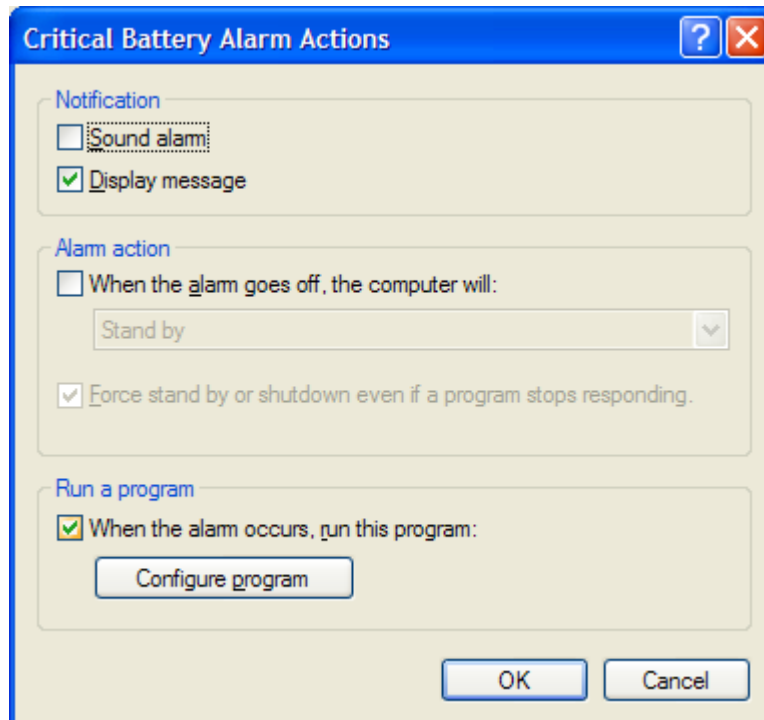
2. Now click on the *Power...* button to display the Power Options Properties dialog, as shown in *Figure 2*.

**Figure 2 - Modifying the critical battery alarm settings**



3. Click on the *Alarm Action...* button in the *Critical battery alarm* section to display the Critical Battery Alarm Actions dialog, as shown in *Figure 3*.

**Figure 3 - Configuring the alarm program**

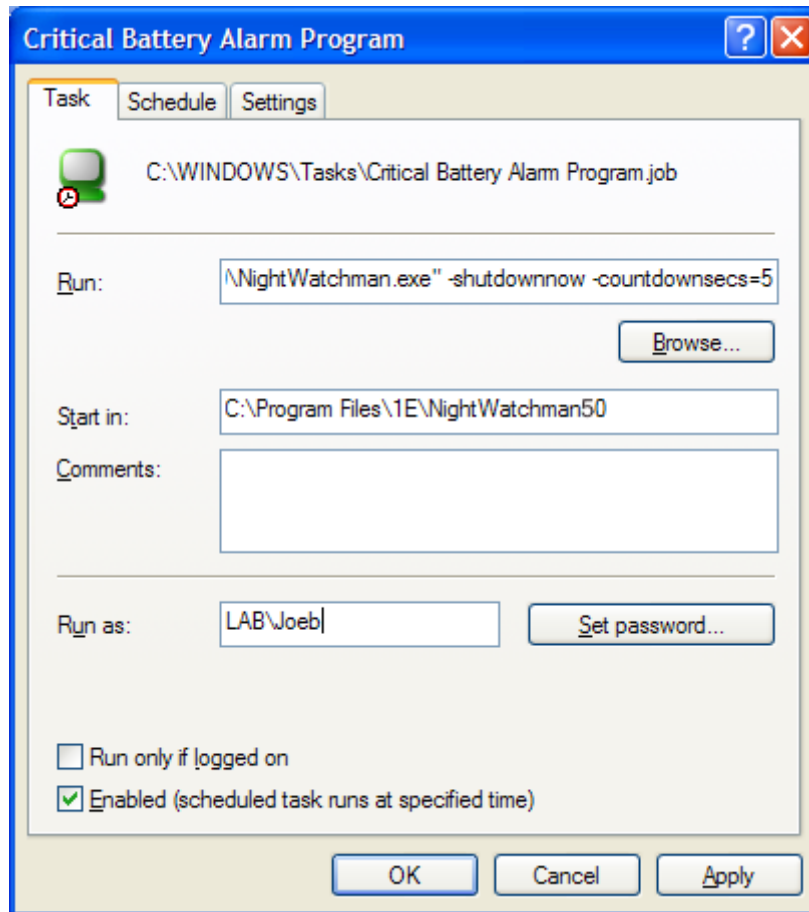


4. Ensure that the *When the alarm occurs, run this program:* checkbox is checked and click on the *Configure program* button to set the program to run.
5. The Critical Battery Alarm Program dialog will be displayed. In the Run field add the path to NightWatchman executable or click on the *Browse...* button to locate the program interactively. Edit the command-line to set the following NightWatchman command-line switches:

```
Nightwatchman.exe -shutdownnow -countdownsecs=5
```

Then define the *Run as:* user account that will be used to run NightWatchman, in this example we specify the user *LAB\Joeb*, as shown in *Figure 4*.

**Figure 4 - Setting the NightWatchman command-line**



6. Once the command-line and user is set click on *OK*, you will then be prompted to set the password for the selected user account. After setting this click on *OK* in all the dialogs.

### Log-off users in a secure environment

In contemporary secure environments it is a requirement that users are logged off from systems when they leave the office. NightWatchman can log-off users even if the system has been locked, or if a password-protected screensaver is in use. NightWatchman can force the system to shut down if you want to be absolutely sure that your systems are shut down each day whilst still attempting to save user data and close applications using the NightWatchman scripts.

The following command line sets NightWatchman to enforce a shutdown on all machines at 8:30 PM allowing no user intervention via the system tray interface:

```
nightwatchman.exe -logoffaction=force -systemtray=OFF -shutdowntime=20:30
```

### Configuring company-wide power schemes

Aside from powering off machines and logging off users, NightWatchman can also control the power schemes currently in use. This means that the settings for power conservation, such as putting the monitor, hard disks and computer into standby mode, can be unified into an enforceable company-wide scheme.

The switches available for managing the power schemes mirror the options that are available to the user through the System Property dialog. They are divided into two main groups: switches that control the settings when the machine is on mains power, and those that control the settings during battery operation.

The following command will set NightWatchman to reapply the power scheme options every log on (thereby overriding any local settings), set the monitor to switch to standby every 5 minutes, set the disks to standby every 10 minutes and set the computer to switch to standby every 15 minutes:

```
nightwatchman.exe -powerscheme=ON -monitorac=5 -diskac=10 -standbyac=15
```

### Close all applications prior to software distribution

NightWatchman can be used to manipulate applications prior to a software update. If you have scheduled an enterprise-wide update of Microsoft Outlook for instance, you want to make sure that Outlook is not running on systems as otherwise the update will fail. NightWatchman scripts can be used to close applications, save documents, manipulate dialog boxes - all in simple scripts using the NightWatchman ActiveX control.

### Shutting down a PC remotely using NightWatchman

If a remote administrator wants to safely shut down a particular PC running NightWatchman they can either run their own local copy of NightWatchman and specify the remote PC name they want to shut down, for example changing to the NightWatchman installation directory and running:

```
nightwatchman.exe <PCName> -shutdownnow
```

where <PCName> is the name of the PC they want to shut down. Alternatively the administrator can send a command, using SMS/ConfigMgr or another Systems Management tool, to prompt NightWatchman on the remote PC to shut down the PC instead, as in the following example:

```
<NightwatchmanPath>\nightwatchman.exe -shutdowntime=now
```

where the administrator should replace <NightWatchmanPath> with the install location for the NightWatchman executable.

The default install location for NightWatchman is *C:\Program Files\1E\Nightwatchman50*.

## 3.3 Configuring NightWatchman shutdown scripts

The functionality of the NightWatchman service can be extended by creating additional shutdown scripts. Administrators can write Windows scripts in either JScript or VBScript to handle the intelligent shutdown of applications, so that no data is lost when performing a user log-off.

The scripts handle eventualities such as saving current versions of all open files, as well as making backups of previously saved versions so users can back out of latest changes if they prefer not to keep them. Any open dialogs are also handled in order to execute the closure of the application in a safe way.

To run correctly, scripts must be saved in the NightWatchman scripts directory, immediately below the NightWatchman installation directory. By default the NightWatchman scripts directory is installed in: *C:\Program Files\1E\Nightwatchman50\Scripts*.

### Writing NightWatchman shutdown scripts

NightWatchman is provided with pre-defined scripts that handle the following products: Microsoft Outlook, Microsoft Word, Microsoft PowerPoint, Microsoft Excel and Notepad. To handle other applications you can either contact 1E or write your own additional scripts using the details provided in *The NightWatchman Scripting Reference*.

## Section 4 Sleepless Client Detection

NightWatchman provides a sleepless detection feature to optimize your NightWatchman Client computer's ability to go into a sleep state, as a result increasing power savings and energy efficiency in your organization. There are two levels of sleepless detection used by NightWatchman the basic level is enabled by default. The advanced level requires explicit enabling.

- In the basic mode sleepless detection will report on faulty input devices and flag up potential causes for why an unattended computer is failing to enter into a low-power state.
- In the advanced mode sleepless detection additionally identifies, where it can, specific processes that are preventing an unattended computer from entering into a low-power state. These processes can then be added to the sleepless exclusion list to enable the computer to enter into a low-power state where appropriate, regardless of whether the named processes are running at that time.

The steps for the basic sleepless detection are as follows:

1. NightWatchman monitors the keyboard and mouse and if it does not find a period of inactivity that is greater than 30 seconds over a 24 hour period it will report back to Agility Framework Reporting listing the input device as potentially being unreliable.
2. If the input devices are verified as allowing the computer to enter a sleep state, NightWatchman then examines the running processes.
  - a. If a process causes overall CPU usage to exceed 20% then this will prevent the computer from going to sleep when it should have and NightWatchman reports it as a "busy process".
  - b. If a process sets a *system required* flag this will be noted in the basic sleepless detection mode but the information as to which process required the system will not be available. In this case NightWatchman will report *<unknown process>* as a "sleepless process".
3. The busy and sleepless process information is batched together with other NightWatchman data for sending back to Agility Framework Reporting at the next transmission time.

Advanced sleepless detection adds the following information to the basic sleepless detection:

1. If a process sets a *system required* flag the system will be analyzed and the actual process name derived and reported as a "sleepless process" in place of the *<unknown process>* reported by the basic sleepless mode.

### 4.1 The Sleepless Client Detection reports

The sleepless detection information from the client is sent back to Agility Framework Reporting and appears in two NightWatchman reports under the heading *Sleepless Client Detection*:

- **Busy and Sleepless Processes** - This report indicates the processes running on the client computer that are the likely cause for it not entering into a low-power state.
- **Untrusted input device** - This report indicates potentially faulty input devices that are the likely cause for a client computer not entering into a low-power state.

### 4.2 Enabling advanced sleepless detection

It is possible that some applied Operating System updates may prevent the advanced sleepless detection feature from functioning correctly. For this reason it is not enabled by default. To benefit from the additional process name information provided by advanced sleepless detection you will need to enable it. This is done either, on the NightWatchman command-line using the *advancedsleeplessdetection* switch, or from the NightWatchman Console in a *Power Policy* definition.

Before enabling on a specific client computer in a production environment we recommend you test against the specific version(s) of Windows in use in your organization to ensure that the feature functions correctly.

### 4.3 The sleepless exclusion list

Once you have reviewed the NightWatchman reports that identify potential reasons why a particular NightWatchman client computer is being kept from entering into a sleep state, you can choose to add any processes named in the report to the sleepless exclusion list for that particular NightWatchman client. This is where the extra process name resolution of the advanced sleepless detection really comes into its own.

You can add process names to the sleepless exclusion list in a number of ways:

#### NightWatchman Console

The most convenient is via a *Power Policy* in the NightWatchman Console. We recommend that the *Power Policy* with the excluded processes only gets applied to the computers reported against in the NightWatchman *Busy and Sleepless Processes* report. For more information on this method of setting the sleepless exclusion list see the NightWatchman Console on-line help file.

#### NightWatchman client command-line

You can modify the sleepless exclusion list directly from a particular NightWatchman client's command-line. There are a number of NightWatchman command-line switches that control the exclusion list that include: *selistshow*, *selistadd*, *selistdel*, *selistfrom* and *selistclear*.

### 4.4 Sleepless exclusion at the point of entering a sleep state

When a NightWatchman client computer is at the point where it should enter a low-power state, NightWatchman checks any named processes on the sleepless exclusion list. If the only processes preventing sleep are in the sleepless exclusion list then NightWatchman will force the computer to enter into a low-power state regardless.

## Section 5 Alarm Clocks and Maintenance Windows

NightWatchman supports an alarm clock feature - making computers available at specific times on specific days of the week and maintenance windows - making computers available at specific times on specific days of the week for configurable periods of time.

### 5.1 Alarm Clocks

An Alarm Clock definition consists of a day of the week and a time when the alarm clock should operate. For example, you may want all the machines in a development department to be available at 08:00am Monday to Friday, except Thursday when there is a team meeting so the machines should be available at 10:00am.

You can set an alarm clock for a NightWatchman client computer by either configuring it from the NightWatchman command-line or via the NightWatchman Console.

#### Configuring an Alarm Clock on the NightWatchman command-line

On the NightWatchman command-line you can set Alarm Clocks using the *alarmclock* and *acturnonmonitor* command-line switches. When using this method of defining Alarm Clocks you will only be able to bring the client computer out of a sleep state and not from a power-off state. To bring clients out of a power-off state you will need to use the NightWatchman Console combined with 1E WakeUp.

**Note: the client computers will be brought out of the low-power state 5 minutes before the alarm clock time to ensure that they are available at the time specified.**

The following command-line sets a weekly Alarm Clock to occur at 08:00am Monday to Friday with the exception of 10:00am Thursday (the client computer will actually be woken up at 07:55am and 9:55am respectively):

```
nightwatchman -alarmclock="mon(08:00)|tue(08:00)|wed(08:00)|thu(10:00)|fri(08:00)"
```

If you want the computer monitor to turn on at the same time as the alarm clock you can set the *acturnonmonitor* as well:

```
nightwatchman -acturnonmonitor=on
```

#### Configuring an Alarm Clock using the NightWatchman Console

You can also define an Alarm Clock for a NightWatchman client computer by creating and applying a *Power Policy*. One advantage of using NightWatchman Power Policies to set the Alarm Clock is that if 1E WakeUp integration is enabled you will be able to bring a computer out of a power-off state, whereas using the NightWatchman command-line alone you will only be able to bring a computer out of a sleep state.

Details on how to configure an Alarm Clock as part of a Power Policy in the NightWatchman Console can be found in the NightWatchman online help file.

#### Keeping a computer awake after an alarm clock

NightWatchman can be installed with a default value to be used to keep computers awake following an alarm clock wake up. This is provided in the *KEEPAWAKEAFTERWAKEUPMINS* installer switch, as documented in the *NightWatchman Installation Guide*. The default setting is 60 minutes which means that the woken computer will stay awake for an hour before returning to sleep.

### 5.2 Maintenance Windows

A Maintenance Window definition consists of a day of the week and a time when the maintenance window should operate, the duration of the maintenance window and the action to take at the end. For example, you may want all the machines in a network to be available at 02:00am every Wednesday to receive *Windows Updates*.

You can set maintenance windows for NightWatchman client computers by either configuring it from the NightWatchman command-line or via the NightWatchman Console.

### Configuring Maintenance Windows on the NightWatchman command-line

On the NightWatchman command-line you can set Maintenance Windows using the *maintenancewnd* and *mwturionmonitor* command-line switches. When using this method of defining maintenance windows you will only be able to bring the client computer out of a sleep state and not from a power-off state. To bring clients out of a power-off state you will need to use the NightWatchman Console combined with 1E WakeUp.

**Note: the client computers will be brought out of the low-power state 5 minutes before the maintenance window start time to ensure that they are available at the time specified.**

The following command-line sets a weekly maintenance window to occur at 02:00am (the client computer will actually be woken up at 01:55am) on a Wednesday, the duration of the maintenance window will be 1 hour and the computer will be put into standby afterwards and the monitor should remain off at all times:

```
nightwatchman -maintenancewnd="monitorstate=off|wed(02:00,60,1)"
```

You can also configure the monitor behavior separately from the *maintenancewnd* switch using the *mwturionmonitor* switch. The following command sets the monitor to turn on during maintenance windows:

```
nightwatchman -mwturionmonitor=on
```

### Configuring Maintenance Windows using the NightWatchman Console

You can also define Maintenance Windows for a NightWatchman client computer by creating and applying a *Power Policy*. One advantage of using NightWatchman Power Policies to set the Maintenance Windows is that if 1E WakeUp integration is enabled you will be able to bring a computer out of a power-off state, whereas using the NightWatchman command-line alone you will only be able to bring a computer out of a sleep state.

Details on how to configure a Maintenance Window as part of a Power Policy in the NightWatchman Console can be found in the NightWatchman online help file.

## Section 6 The NightWatchman Command-line Reference

NightWatchman can be configured from the command-line by administrators. This enables systems running NightWatchman across an enterprise configurable from a central location using any systems management tool that enables commands to be run on remote PCs.

### 6.1 The NightWatchman command line switch syntax

The references in the following tables all relate to switches that can be set on the NightWatchman executable or service command lines. In the table, the name and values are shown without the syntax required to make a valid command line switch. All switches must be preceded by a dash and all values should be set using an equals sign, as shown in the following generic example:

```
nightwatchman.exe -<switch>=<value>
```

Where <switch> is replaced by the switch name and <value> is replaced by the value definition given in the following tables. For example, the following command sets the NightWatchman service to specifically start once:

```
nwmsvc.exe -start
```

Whereas, the following command sets the NightWatchman service to automatically start every time Windows is started:

```
nwmsvc.exe -start=auto
```

**Note: the example NightWatchman command-lines provided in this manual only refer to the NightWatchman or NightWatchman service executable name. By default NightWatchman is not placed on the Windows Path, in order to run NightWatchman you will need to either specify the complete path to the installation directory where the NightWatchman executable resides or change to that directory.**

### 6.2 NightWatchman command line switches by category

The following headings categorise the NightWatchman command line switches into the main functional areas: general switches, system switches, power scheme switches, reporting switches and other switches.

#### NightWatchman service switches

There are a number of NightWatchman command-line switches that set the parameters for the NightWatchman service. These switches are run on the service command-line, for example the following command-line stops the NightWatchman service:

```
nwmsvc.exe -stop
```

These are listed in the following table:

**Table 2 - The NightWatchman service switches**

Action	Switch
Auto-install the NightWatchman service for automatic start; do not start the service	install
Remove the NightWatchman service; stop the service first if necessary	remove
License NightWatchman with a specified license key	relicense
Start the NightWatchman service	start
Stop the NightWatchman service	stop

### NightWatchman executable information switches

The switches in the following table can be run on the NightWatchman command-line and display information on the current version and settings for NightWatchman.

**Table 3 - The NightWatchman executable switches**

Action	Switch
Display the version number of the NightWatchman service	version
Display the current NightWatchman service configuration parameters	settings
Display a dialog containing a summary of the current NightWatchman configuration settings	summary
Display the NightWatchman command-line help	help

### Main functionality switches

The following switches control the main functionality of NightWatchman.

**Table 4 - The NightWatchman system switches**

Action	Switch
Set the shutdown days	shutdowndays
Set the shutdown time	shutdowntime
Request an immediate shutdown	shutdownnow
Request an immediate hibernation	hibernatenow
Request an immediate standby	standbynow
Set the behaviour of NightWatchman if a user is logged on during a NightWatchman shutdown	logoffaction
Setting the length of the countdown used during log-off	countdownsecs
Set the number of shutdown retries	retryattempts
Set the retry interval	retryinterval
Set the message displayed during a NightWatchman controlled shutdown	shutdownmsg
Request a one-off shutdown, standby or hibernate, according to the current setting for the -shutdownaction switch	onceoff This new flag has replaced the obsoleted flag shutdownonce
Configuring the NightWatchman shutdown actions	shutdownaction
Controlling the NightWatchman system tray icon	systemtray
Setting timeouts for the NightWatchman scripts	scripttimeoutsecs
Check for pending SMS/ConfigMgr jobs on shutdown	pendingjobwindowmins monitorjobs
Set the length of the window for the recent user activity test governing automatic postponement	useractivitymaxidlemins

### Power policy switches

These switches set the communications between the NightWatchman client and the Agility Framework server to retrieve its Power Policies from the NightWatchman Console.

**Table 5 - The NightWatchman Power Policy switches**

Action	Switch
Sets the location of the NightWatchman Management Center Policy Service.	polycyserverurl
Sets the polling interval, in minutes, to check for new Power Policy settings.	pollintervalmins
Sets the retry interval, in minutes, to check for new power policy settings if the initial check fails.	pollretryintervalmins

### Power scheme switches

The following switches set the options for advanced power scheme management. These switches control the settings for the monitor, disk, sleep and hibernate functions.

**Table 6 - The NightWatchman Power Scheme switches**

Action	Switch
Control how NightWatchman applies a power scheme	powerscheme
Set the monitor standby period used when PC is running on mains power	monitorac
Set the monitor standby period used when PC is running on battery	monitordc
Set the disk standby period used when PC is running on mains power	diskac
Set the disk standby period used when PC is running on battery	diskdc
Set the PC standby period used when PC is running on mains power	standbyac
Set the PC standby period used when PC is running on battery	standbydc
Set the PC hibernate period used when PC is running on mains power	hibernateac
Set the PC hibernate period used when PC is running on battery	hibernatedc
Set the computer to require a password when resuming from hibernate or standby	passwordonwakeup

### Process exception list switches

The following switches control the process exception list feature. When a scheduled NightWatchman shutdown sequence is taking place, before running the NightWatchman shutdown scripts, NightWatchman will check to see if any of the processes in the list are running and abort the shutdown if any are found.

**Table 7 - The NightWatchman process exception list switches**

Action	Switch
Display the current exception list	pelistshow
Add a single process name to the list	pelistadd
Delete a single process name from the list	pelistdel
Add a list of process names from a file	pelistfrom
Delete the entire process exception list	pelistclear

### Sleepless detection switches

The following switches configure the use of advanced sleepless detection and control the sleepless exclusion list feature. Some processes may prevent computers from going into a sleep

state. The exclusion list contains a list of processes that NightWatchman tells the computer to ignore when it attempts to enter a sleep state.

**Table 8 - The NightWatchman sleepless exclusion list switches**

Action	Switch
Turns on the advanced sleepless detection functionality	advancedsleeplessdetection
Display the current exclusion list	selistshow
Add a single process name to the list	selistadd
Delete a single process name from the list	selistdel
Add a list of process names from a file	selistfrom
Delete the entire sleepless exclusion list	selistclear

### Alarm clock and maintenance window switches

The following switches control the alarm clock and maintenance window capabilities of NightWatchman.

**Table 9 - The NightWatchman alarm clock and maintenance window switches**

Action	Switch
Define a weekly alarm clock schedule	alarmclock
Set the monitor behaviour when an alarm clock occurs	acturnonmonitor
Define a weekly maintenance window schedule	maintenancewnd
Set the monitor behaviour when a maintenance window occurs	mwturnonmonitor

### Reporting and Policy switches

The following switches control the reporting and policy retrieval capabilities of NightWatchman.

**Table 10 - The NightWatchman Reporting switches**

Action	Switch
Set the certificate issuer when using client certificate authentication over HTTPS	polycertissuer
Set the certificate subject when using client certificate authentication over HTTPS	polycertsubject
Set the certificate issuer when using client certificate authentication over HTTPS	reportingcertissuer
Set the certificate subject when using client certificate authentication over HTTPS	reportingcertsubject
Set the URL for the NightWatchman Management Center Web Service policy retrieval when using HTTP	policyserverurl
Turn NightWatchman reporting on or off	reporting
Set the URL for the NightWatchman Management Center Web Service reporting when using HTTP	reportingserverurl
Set the URL for the NightWatchman Management Center Web Service reporting when using HTTPS	securepolicyserverurl
Set the URL for the NightWatchman Management Center Web Service policy retrieval when using HTTP	securereportingserverurl

**Log file switches**

The following switches set general options related to the NightWatchman log file.

**Table 11 - The NightWatchman options switches**

<b>Action</b>	<b>Switch</b>
Set the level of debug information output to the NightWatchman logfile	debug
Set the location and name for the NightWatchman logfile	logfilename
Set the maximum size in bytes for the NightWatchman logfile	maxlogfilesize

### 6.3 NightWatchman alphabetic switch reference

The following table describes the NightWatchman switches. They are listed alphabetically for convenience.

**Table 12 - The NightWatchman switch reference**

Switches	Description
acturnonmonitor	<p>Sets whether the display for a computer will also be turned on when an alarm clock wake up occurs.</p> <p>The following sets the monitors to turn on when an alarm clock occurs:</p> <pre>nightwatchman -acturnonmonitor=on</pre>
advancedsleeplessdetection	<p>Turns the advanced sleepless detection mode on or off. If advanced mode is off that sleepless detection operates in basic mode, see <i>Section 4 - Sleepless Client Detection</i> for more details on how sleepless detection works in basic and advanced modes.</p> <p>After a default installation this mode is turned off. It is possible that some applied Operating System updates may prevent this feature from functioning correctly. Before enabling in a production environment we recommend you test against the specific version(s) of Windows in use in your organization.</p> <p>The following command-line turns the advanced sleepless detection mode on:</p> <pre>nightwatchman -advancedsleeplessdetection=on</pre>
alarmclock	<p>Sets an alarm clock schedule for specific days of the week. The format of the value is a list of entries separated by a vertical bar  , where each entry specifies a day of operation and a time to wake up, in the following format: <i>day(Hrs:Mins)</i>.</p> <p>The client computer will be woken up 5 minutes <i>before</i> the specified time to ensure its availability <i>at</i> that time.</p> <p>For example, the following sets an alarm clock for 7am Monday and 8am Tuesday (the client computer will be awoken at 06:55 and 07:55 respectively):</p> <pre>nightwatchman -alarmclock="mon(07:00) tue(08:00)"</pre>
autorestart	<p>This switch has been deprecated as NightWatchman no longer supports non-APM/ACPI machines.</p>
countdownsecs	<p>Sets the number of seconds that the countdown timer dialog box will be displayed before the shutdown or log-off action is executed.</p> <p>For example, the following command line sets the system to provide a 5 minute countdown:</p> <pre>nightwatchman -countdownsecs=300</pre> <p>The minimum value for this switch is 0 seconds. The countdown timer dialog will only appear if <i>countdownsecs</i> is non-zero.</p> <p>The maximum value is 3600 seconds (1 hour)</p> <p>The default value for this switch is 30 seconds.</p>
debug	<p>Sets the level of debug information output to the NightWatchman logfile.</p> <p>The default value for this switch is 13.</p>
diskac	<p>Sets the hard disks to switch to standby after a specified number of minutes of system idle time when the computer is running on</p>

	<p>mains power.</p> <p>A value of zero turns this power management option off.</p> <p>The default value for this switch is 60 minutes.</p>						
diskdc	<p>Sets the hard disks to switch to standby after a specified number of minutes of system idle time when the computer is running on battery power.</p> <p>A value of zero turns this power management option off</p> <p>The default value for this switch is 5 minutes</p>						
help	Displays the command line syntax help.						
hibernateac	<p>Sets the computer to hibernate after a specified number of minutes of system idle time when the computer is running on mains power.</p> <p>A value of zero turns this power management option off</p> <p>The default value for this switch is 0</p>						
hibernatedc	<p>Sets the computer to hibernate after a specified number of minutes of system idle time when the computer is running on battery power.</p> <p>A value of zero turns this power management option off</p> <p>The default value for this switch is 0</p>						
hibernatenow	<p>Puts the PC into hibernate mode. This switch works in conjunction with the <i>countdownsecs</i> and <i>shutdownmsg</i> switches. Any other switches on the same command-line will abort the hibernate operation and report an error.</p>						
ignoreerrors	<p>Sets the behaviour on encountering errors in the shutdown scripts during shutdown.</p> <table border="1"> <thead> <tr> <th>Value</th> <th>Description</th> </tr> </thead> <tbody> <tr> <td>ON</td> <td>During shutdown any errors from the shutdown scripts will be ignored and the shutdown will be allowed to continue. The user will be presented with the option of cancelling shutdown.</td> </tr> <tr> <td>OFF</td> <td>Shutdown script errors will prevent shutdown from taking place.</td> </tr> </tbody> </table> <p>The default value for this switch is <i>OFF</i></p>	Value	Description	ON	During shutdown any errors from the shutdown scripts will be ignored and the shutdown will be allowed to continue. The user will be presented with the option of cancelling shutdown.	OFF	Shutdown script errors will prevent shutdown from taking place.
Value	Description						
ON	During shutdown any errors from the shutdown scripts will be ignored and the shutdown will be allowed to continue. The user will be presented with the option of cancelling shutdown.						
OFF	Shutdown script errors will prevent shutdown from taking place.						
logfilename	<p>Sets the location and name for the NightWatchman log file.</p> <p>For example the following command sets the logfile to be in the directory <i>C:\TEMP</i> and to have the name <i>NW.LOG</i>:</p> <pre>nightwatchman -logfile=C:\TEMP\NW.LOG</pre> <p>The default value for this switch on Windows Vista is:</p> <pre>C:\ProgramData\1E\Nightwatchman50\nightwatchman.log</pre> <p>In Windows XP and Windows 2000 the default is:</p> <pre>C:\Documents and Settings\All Users\Application Data\1E\Nightwatchman50\nightwatchman.log</pre>						

<p>logoffaction</p>	<p>Determines the behaviour when a user is logged onto the system. In <i>Active</i> and <i>Force</i> mode scripts will be executed to close down applications gracefully.</p> <table border="1" data-bbox="639 297 1426 712"> <thead> <tr> <th>Value</th> <th>Description</th> </tr> </thead> <tbody> <tr> <td>Passive</td> <td>The machine will be shut down providing no-one is currently logged on.</td> </tr> <tr> <td>Active</td> <td>User will be given the option to postpone a log-off. If the user is not present and the countdown timer dialog expires, log-off will occur. Log-off will be stopped if any scripts generate an error.</td> </tr> <tr> <td>Force</td> <td>Will force a log-off. The countdown timer dialog has no cancel option. The log-off will ignore any errors generated by the shutdown scripts. Unsaved data may be lost. This action cannot be postponed or cancelled.</td> </tr> </tbody> </table> <p>The default value for this switch is <i>Active</i></p>	Value	Description	Passive	The machine will be shut down providing no-one is currently logged on.	Active	User will be given the option to postpone a log-off. If the user is not present and the countdown timer dialog expires, log-off will occur. Log-off will be stopped if any scripts generate an error.	Force	Will force a log-off. The countdown timer dialog has no cancel option. The log-off will ignore any errors generated by the shutdown scripts. Unsaved data may be lost. This action cannot be postponed or cancelled.
Value	Description								
Passive	The machine will be shut down providing no-one is currently logged on.								
Active	User will be given the option to postpone a log-off. If the user is not present and the countdown timer dialog expires, log-off will occur. Log-off will be stopped if any scripts generate an error.								
Force	Will force a log-off. The countdown timer dialog has no cancel option. The log-off will ignore any errors generated by the shutdown scripts. Unsaved data may be lost. This action cannot be postponed or cancelled.								
<p>maintenancewnd</p>	<p>Sets a maintenance schedule for specific days of the week. The format of the value is a list of entries separated by a vertical bar  .</p> <p>The first entry in the list specifies what action to take on the monitor state and uses the format: <i>monitorstate=state</i>, where state is <i>on</i> or <i>off</i>.</p> <p>The remaining entries specify a day of operation, a time to wake up a duration and an action to perform at the end, in the following format: <i>day(Hrs:Mins,Duration,EndAction)</i>.</p> <p><b>Note: the <i>Hrs:Mins</i> parameter must always be in the format <i>hh:mm</i>. So to represent 3am the string would be <i>03:00</i>.</b></p> <p>The client computer will be woken up 5 minutes <i>before</i> the specified <i>Hrs:Mins</i> time to ensure its availability <i>at</i> that time.</p> <p><i>EndAction</i> may take one of values shown in the following table:</p> <table border="1" data-bbox="639 1261 1426 1473"> <thead> <tr> <th>Value</th> <th>Description</th> </tr> </thead> <tbody> <tr> <td>0</td> <td>Do nothing</td> </tr> <tr> <td>1</td> <td>Put the client computer into standby</td> </tr> <tr> <td>2</td> <td>Put the client computer into hibernate</td> </tr> </tbody> </table> <p>For example, the following sets the monitors to not turn on when the maintenance windows occur; sets a maintenance window for <i>3am</i> (the client computer will be awoken at <i>02:55am</i>) each <i>Monday</i> that lasts for <i>23 minutes</i> and leaves the computer on and another for <i>2am</i> (the client computer will be awoken at <i>01:55am</i>) each <i>Tuesday</i> that lasts for <i>1 hour</i> and puts the computer into standby:</p> <pre data-bbox="639 1682 1426 1742">nightwatchman -maintenancewnd="monitorstate=off  mon(03:00,23,0) tue(02:00,60,1)"</pre>	Value	Description	0	Do nothing	1	Put the client computer into standby	2	Put the client computer into hibernate
Value	Description								
0	Do nothing								
1	Put the client computer into standby								
2	Put the client computer into hibernate								
<p>maxbatchsendintervalsecs</p>	<p>Sets the maximum interval, in seconds, to wait before batch dispatching messages in the spooler to the NightWatchman Management Center Web Service.</p> <p>This switch, set by the installer, modifies the settings for communicating with the NightWatchman Management Center Reporting and should not need to be modified under normal circumstances</p>								
<p>maximumfileagesecs</p>	<p>Sets the maximum age, in seconds, for the Nightwatchman Client to store reporting information locally when the NightWatchman</p>								

	<p>Management Center Web Service cannot be contacted</p> <p>This setting defaults to 604800 which is equivalent to 7 days. Beyond this value the file will not be submitted to the NightWatchman Management Center Reporting and will be deleted instead</p> <p>This switch, set by the installer, need not be modified under normal circumstances</p>
maxlogfilesize	<p>Specifies the maximum size in bytes for the NightWatchman logfile. If the logfile exceeds this value NightWatchman will save the current logfile to a file in the same location but with the extension .LO_, overwriting any existing copy. NightWatchman will then continue to write to the file specified by the logfilefilename switch</p> <p>For example, the following command line sets the logfile to have a maximum size of just 32K:</p> <pre>nightwatchman -maxlogfilesize=32768</pre> <p>The default value for this switch is 1048576.</p>
minmessagesperbatch	<p>Sets the minimum number of messages in the spooler before a batch is dispatched to the NightWatchman Management Center Web Service.</p> <p>By default this is set to 25 messages.</p> <p>This switch, set by the installer, modifies the settings for communicating with NightWatchman Management Center Reporting and should not need to be modified under normal circumstances</p>
monitorac	<p>Set the monitor to switch to standby after a specified number of minutes of system idle time when the computer is running on mains power.</p> <p>A value of zero turns this power management option off</p> <p>The default value for this switch is 15 minutes</p>
monitordc	<p>Set the monitor to switch to standby after a specified number of minutes of system idle time when the computer is running on battery power.</p> <p>A value of zero turns this power management option off</p> <p>The default value for this switch is 3 minutes</p>
monitorjobs	<p>Turn the SMS/ConfigMgr job monitoring on or off. This switch takes the values <i>ON</i> or <i>OFF</i> and sets the corresponding behaviour for the job monitoring.</p> <p>The setting for this switch also controls the integration with 1E WakeUp. When monitorjobs is set to <i>ON</i>, NightWatchman will perform auto-shutdown for machines awoken by a scheduled 1E WakeUp signal.</p> <p>The default value for this switch is <i>ON</i>.</p>
mwturionmonitor	<p>Sets whether the display for a computer will also be turned on when a maintenance window wake up occurs.</p> <p>The following sets the monitors to turn on when a maintenance window wake up occurs:</p> <pre>nightwatchman -mwturionmonitor=on</pre>
onceoff	<p>This switch determines that the other switches on the NightWatchman command-line will be applied in a once-off operation. Any other switches used in conjunction with the onceoff</p>

	<p>command will not affect any global scheduled settings.</p> <p>This switch can be used in conjunction with the <i>countdownsecs</i>, <i>logoffaction</i>, <i>shutdownaction</i>, <i>shutdownmsg</i> and <i>shutdowntime</i> switches.</p> <p>The following example sets NightWatchman to force a shutdown at 7:30 pm.</p> <pre>nightwatchman -onceoff -shutdowntime=19:30 - logoffaction=force -shutdownaction=normal</pre> <p><b>Note: <i>onceoff</i> will only retry on the day of the shutdown. If the day expires before the <i>retryattempts</i> value has been reached no more retries will be attempted. If you do not want your users to be able to cancel the shutdown you should use the <i>-logoffaction=force</i> switch setting as used in the command-line shown above.</b></p>
passwordonwakeup	<p>Determines whether a password is required when the client computer resumes from standby or hibernate. This can be set to either <i>on</i>, to require a password or <i>off</i>, to not require a password.</p> <p>The following example sets the client computer to require a password on resumption:</p> <pre>nightwatchman -passwordonwakeup=on</pre>
pelistadd	<p>This switch adds a process name to the process exception list. The process name must match the name used for the process as it appears in Task Manager.</p> <p>The following example sets NightWatchman to abort shutdowns when the notepad application is running:</p> <pre>nightwatchman -pelistadd=notepad.exe</pre>
pelistclear	<p>Clears all the currently set process exceptions.</p>
pelistdel	<p>Deletes an entry from the process exception list.</p> <p>The following example removes the notepad application process from the process exception list:</p> <pre>nightwatchman -pelistdel=notepad.exe</pre>
pelistfrom	<p>Adds process exceptions to the process exceptions list from a named file. The specified file must contain a list of process names with one name to each line in the file.</p> <p><b>Note: this command line option clears any existing items in the process exceptions list before adding the new items from the file.</b></p> <p>For example the following shows the contents of a process exception file called <i>myprocesses.txt</i> with three processes set:</p> <pre>notepad.exe iexplore.exe myprocess.exe</pre> <p>This file would then be loaded into the NightWatchman process exception list with the following command-line:</p> <pre>nightwatchman -pelistfrom=myprocesses.txt</pre>
pelistshow	<p>Displays the currently set process exception list.</p>
pendingjobwindowmins	<p>The <i>pendingjobwindowmins</i> value is used to modify the NightWatchman shutdown behaviour according to pending SMS/ConfigMgr jobs. It takes an integer that defines the number of minutes in the look-ahead window.</p> <p>The behaviour of this switch depends on the setting for the</p>

	<p><i>monitorjobs</i> switch. For NightWatchman to check the pending/running SMS/ConfigMgr jobs the <i>monitorjobs</i> switch must be set to <i>ON</i>, as it is by default.</p> <p>The way that the shutdown behaviour is modified is dependent on the type of shutdown, as shown in the following table:</p> <table border="1" data-bbox="639 371 1425 1064"> <thead> <tr> <th>Shutdown type</th> <th>Behaviour</th> </tr> </thead> <tbody> <tr> <td>Shutdown now</td> <td>NightWatchman checks if there are any pending jobs within the specified look-ahead window starting from the current time, and also checks for currently running jobs. If either of these exist NightWatchman then checks the state of the corresponding Advertised Program and aborts the shutdown attempt if appropriate; otherwise the shutdown continues as requested.</td> </tr> <tr> <td>Scheduled Shutdown</td> <td>NightWatchman checks if there are any pending jobs within the specified look-ahead window starting from the current time, and also checks for currently running jobs. If either of these exist NightWatchman then checks the state of the corresponding Advertised Program and the shutdown attempt is deferred, if appropriate, until the next retry time; otherwise the shutdown continues as requested.</td> </tr> </tbody> </table> <p><b>For the best behaviour we recommend that the <i>pendingjobwindowmins</i> value is set to slightly larger than the SMS/ConfigMgr poll refresh interval on the client.</b></p> <p>When the <i>pendingjobwindowmins</i> switch is set to 0, but the <i>monitorjobs</i> switch is set to <i>ON</i>, the look-ahead functionality is turned off but the check for running SMS/ConfigMgr jobs will still happen. To turn off SMS/ConfigMgr job monitoring altogether you should set the <i>monitorjobs</i> switch to <i>OFF</i>.</p> <p><b>Note: this behaviour is dependent on checking the list of pending SMS/ConfigMgr jobs with the local SMS/ConfigMgr Client. If the Client is not installed on the local PC then shutdown will proceed as normal regardless of the setting of the switch.</b></p> <p>The default value for this switch is 5.</p>	Shutdown type	Behaviour	Shutdown now	NightWatchman checks if there are any pending jobs within the specified look-ahead window starting from the current time, and also checks for currently running jobs. If either of these exist NightWatchman then checks the state of the corresponding Advertised Program and aborts the shutdown attempt if appropriate; otherwise the shutdown continues as requested.	Scheduled Shutdown	NightWatchman checks if there are any pending jobs within the specified look-ahead window starting from the current time, and also checks for currently running jobs. If either of these exist NightWatchman then checks the state of the corresponding Advertised Program and the shutdown attempt is deferred, if appropriate, until the next retry time; otherwise the shutdown continues as requested.
Shutdown type	Behaviour						
Shutdown now	NightWatchman checks if there are any pending jobs within the specified look-ahead window starting from the current time, and also checks for currently running jobs. If either of these exist NightWatchman then checks the state of the corresponding Advertised Program and aborts the shutdown attempt if appropriate; otherwise the shutdown continues as requested.						
Scheduled Shutdown	NightWatchman checks if there are any pending jobs within the specified look-ahead window starting from the current time, and also checks for currently running jobs. If either of these exist NightWatchman then checks the state of the corresponding Advertised Program and the shutdown attempt is deferred, if appropriate, until the next retry time; otherwise the shutdown continues as requested.						
<p>polycertissuer</p>	<p>When using HTTPS for communications and using client certificate authentication, set this to the certificate issuer text. This must be set to the same as the <i>reportingcertissuer</i>.</p>						
<p>polycertsubject</p>	<p>When using HTTPS for communications and using client certificate authentication, set this to the certificate subject text. This must be set to the same as the <i>reportingcertsubject</i>.</p>						
<p>policyserverurl</p>	<p>Sets the location of the NightWatchman Management Center Policy Service. It specifies the full URL to the Policy Service section of the NightWatchman Management Center Web Service Component.</p> <p>This value is set during installation and will not require modification during normal use. If you do need to change this you must set the full URL. The URL is in the following form:</p> <pre>http://&lt;server&gt;/AFWebService/PolicyService.aspx</pre> <p>Where &lt;server&gt; must be replaced by the location of your server</p>						

	<p>when setting the value. For example if the name of your NightWatchman Management Center Web Service server is <i>AFServer</i> then the URL should be set as follows:</p> <pre>nightwatchman -policyserverurl= http://AFServer/AFWebService/PolicyService.asmx</pre>										
pollintervalmins	<p>Sets the polling interval, in minutes, to check for new Power Policy settings.</p> <p>The Power Policies and their application to particular groups of computers are defined using the NightWatchman Console. This poll checks to see which Power Policy should be used for the client computer and retrieves the settings.</p> <p>The maximum value for this setting is 43200</p> <p>The minimum value for this setting is 1</p> <p>The NightWatchman Client installer sets this to a default of 3000.</p> <p>The Power Policies held in the NightWatchman Management Center will set this value if applied to the NightWatchman Client. The default values in the NightWatchman Management Center are dependent on the environment size selected in the NightWatchman Management Center installer. These defaults are shown in the following table:</p> <table border="1"> <thead> <tr> <th>Size</th> <th>Value</th> </tr> </thead> <tbody> <tr> <td>Very Small</td> <td>1</td> </tr> <tr> <td>Small</td> <td>90</td> </tr> <tr> <td>Medium</td> <td>1500</td> </tr> <tr> <td>Large</td> <td>3000</td> </tr> </tbody> </table>	Size	Value	Very Small	1	Small	90	Medium	1500	Large	3000
Size	Value										
Very Small	1										
Small	90										
Medium	1500										
Large	3000										
pollintervalsecs	<p>Sets the interval, in seconds, for reporting messages being sent to the NightWatchman Management Center Web Service Component</p> <p>By default this is set to 600 seconds</p> <p>This switch, set by the installer, modifies the settings for communicating with NightWatchman Management Center Reporting and should not need to be modified under normal circumstances</p>										
pollretryintervalmins	<p>Sets the retry interval, in minutes, to check for new power policy settings if the initial check fails.</p> <p>The maximum value for this setting is 1440</p> <p>The minimum value for this setting is 1</p> <p>This defaults to 30</p>										
powerscheme	<p>Controls the setting of a NightWatchman power scheme when the service starts and at user login.</p> <p><b>Note: The logged in user requires permissions to be able to change their local power scheme.</b></p> <table border="1"> <thead> <tr> <th>Value</th> <th>Description</th> </tr> </thead> <tbody> <tr> <td>ON</td> <td>The NightWatchman power scheme will be applied when the service starts and when a user logs in.</td> </tr> <tr> <td>OFF</td> <td>The power scheme will not be applied.</td> </tr> </tbody> </table> <p>The default value for this switch is <i>OFF</i></p>	Value	Description	ON	The NightWatchman power scheme will be applied when the service starts and when a user logs in.	OFF	The power scheme will not be applied.				
Value	Description										
ON	The NightWatchman power scheme will be applied when the service starts and when a user logs in.										
OFF	The power scheme will not be applied.										
relicense	<p>This is a NightWatchman service switch.</p> <p>Licenses NightWatchman with the given license key. If no license</p>										

	<p>key was set when installing NightWatchman, a 30 day evaluation license is applied. This switch allows you to subsequently register NightWatchman with a valid license key obtained from <a href="mailto:sales@1e.com">sales@1e.com</a>.</p> <p>For example the following command line licenses NightWatchman with the example license key <i>ABCDE-1234-3456-5678-5678</i>:</p> <pre>nwmsvc.exe -relicense=ABCDE-1234-3456-5678-5678</pre> <p><i>relicense</i> with no parameters displays a dialog box where the license key can be entered</p>						
reporting	<p>Sets the status of NightWatchman reporting.</p> <table border="1"> <thead> <tr> <th>Value</th> <th>Description</th> </tr> </thead> <tbody> <tr> <td>ON</td> <td>Turns NightWatchman reporting on. With this flag set NightWatchman will regularly send messages to the NightWatchman Management Center Web Service as located by the <i>reportingserverurl</i> switch.</td> </tr> <tr> <td>OFF</td> <td>Turns NightWatchman reporting off. No messages will be sent over the network.</td> </tr> </tbody> </table> <p>The default value for this switch is <i>OFF</i></p>	Value	Description	ON	Turns NightWatchman reporting on. With this flag set NightWatchman will regularly send messages to the NightWatchman Management Center Web Service as located by the <i>reportingserverurl</i> switch.	OFF	Turns NightWatchman reporting off. No messages will be sent over the network.
Value	Description						
ON	Turns NightWatchman reporting on. With this flag set NightWatchman will regularly send messages to the NightWatchman Management Center Web Service as located by the <i>reportingserverurl</i> switch.						
OFF	Turns NightWatchman reporting off. No messages will be sent over the network.						
reportingcertissuer	When using HTTPS for communications and using client certificate authentication, set this to the certificate issuer text. This must be set to the same as the <i>policycertissuer</i> .						
reportingcertsubject	When using HTTPS for communications and using client certificate authentication, set this to the certificate subject text. This must be set to the same as the <i>policycertsubject</i> .						
reportingserver	This switch has been replaced by <i>reportingserverurl</i> .						
reportingserverurl	<p>Sets the URL for the NightWatchman Management Center Web Service reporting.</p> <p>This switch should be set to a string that specifies the full URL for the NightWatchman Management Center Web Service. This should be a string of the following form:</p> <pre>http://&lt;server&gt;/AFWebService/PostMessage.aspx</pre> <p>where <i>&lt;server&gt;</i> should be replaced with the location of the NightWatchman Management Center Web Service Component.</p> <p>For example the following command-line sets the URL where the Web Service is installed on a server called <i>RServ</i>:</p> <pre>nightwatchman -reportingserverurl=http://RServ/AFWebService/PostMessage.aspx</pre> <p>This switch, set by the installer, modifies the settings for communicating with the NightWatchman Management Center and should not need to be modified under normal circumstances.</p>						
retryattempts	<p>Sets the number of times that a shutdown will be attempted if cancelled by the user.</p> <p>Where the value is an integer denoting the number of repeats. For example, the following command line sets NightWatchman to try to shut down 10 times:</p> <pre>nightwatchman -retryattempts=10</pre> <p>The minimum value for this switch is 0 retries</p> <p>The maximum value is 1440 retries</p>						

	The default value for this switch is 3 times						
retryinterval	<p>Sets the interval in minutes at which the service will retry the shutdown if cancelled by the user or if the shutdown cannot be performed.</p> <p>For example, the following command line sets the system to retry every 15 minutes:</p> <pre>nightwatchman -retryinterval=15</pre> <p>The minimum value for this switch is 1 minute</p> <p>The maximum value is 60 minutes</p> <p>The default value is 60 minutes</p>						
runalways	<p>Sets the behaviour for the <i>runalways.vbs</i> script.</p> <table border="1"> <thead> <tr> <th>Value</th> <th>Description</th> </tr> </thead> <tbody> <tr> <td>ON</td> <td>When this flag is set, the following script (if it exists) will always be run when logging off a user after any other scripts have run:  <i>&lt;InstallDir&gt;\Scripts\RunAlways.vbs</i></td> </tr> <tr> <td>OFF</td> <td>The script is not run</td> </tr> </tbody> </table> <p><b>Note: the NightWatchman scripts, including <i>RunAlways.vbs</i>, are only run if a user is logged into the machine.</b></p> <p>The default value for this switch is <i>OFF</i></p>	Value	Description	ON	When this flag is set, the following script (if it exists) will always be run when logging off a user after any other scripts have run:  <i>&lt;InstallDir&gt;\Scripts\RunAlways.vbs</i>	OFF	The script is not run
Value	Description						
ON	When this flag is set, the following script (if it exists) will always be run when logging off a user after any other scripts have run:  <i>&lt;InstallDir&gt;\Scripts\RunAlways.vbs</i>						
OFF	The script is not run						
runscriptseverylogoff	This switch has been deprecated as the machine shutdown mechanism has changed radically for Windows Vista and the previous behaviour cannot currently be supported.						
scripttimeoutsecs	<p>The value for this switch controls how many seconds NightWatchman will wait before it decides that a script has timed out.</p> <p>The minimum value for this switch is 1</p> <p>The maximum value is 120</p> <p>The default value is 10 seconds</p>						
securepolicyserverurl	<p>Sets the location of the NightWatchman Management Center Policy Service. It specifies the full URL to the Policy Service section of the NightWatchman Management Center Web Service Component.</p> <p>This value is set during installation and will not require modification during normal use. If you do need to change this you must set the full URL. The URL is in the following form:</p> <pre>https://&lt;server&gt;/AFWebService/PolicyService.asmx</pre> <p>Where <i>&lt;server&gt;</i> must be replaced by the location of your server when setting the value. For example if the name of your NightWatchman Management Center Web Service server is <i>AFServer</i> then the URL should be set as follows:</p> <pre>nightwatchman -securepolicyserverurl=https://AFServer/AFWebService/PolicyService.asmx</pre>						
securereportingserverurl	<p>Sets the URL for the NightWatchman Management Center Web Service reporting.</p> <p>This switch should be set to a string that specifies the full URL for the NightWatchman Management Center Web Service. This should be a string of the following form:</p>						

	<pre>https://&lt;server&gt;/AFWebService/PostMessage.aspx</pre> <p>where &lt;server&gt; should be replaced with the location of the NightWatchman Management Center Web Service Component.</p> <p>For example the following command-line sets the URL where the Web Service is installed on a server called <i>RServ</i>:</p> <pre>nightwatchman -securereportingserverurl=https://RServ/AFWebService/PostMessage.aspx</pre> <p>This switch, set by the installer, modifies the settings for communicating with the NightWatchman Management Center and should not need to be modified under normal circumstances.</p>
selistadd	<p>This switch adds a process name to the sleepless exclusion list. The process name must match the name used for the process as it appears in the NightWatchman <i>Sleepless Client Detection/Busy and Sleepless Processes</i> report.</p> <p>Normally the name will match that seen in Task Manager, but for running services that are hosted by SvcHost, <i>SvcHost.exe</i> will be reported back. You will only get the detail of the service name if advanced sleepless client detection is turned on.</p> <p>The following example sets NightWatchman to sleep even if the <i>LanManServer</i> service is preventing this from happening:</p> <pre>nightwatchman -selistadd=SvcHost.exe(LanManServer)</pre>
selistclear	Clears all the currently set sleepless exclusions.
selistdel	<p>Deletes an entry from the sleepless exclusion list.</p> <p>The following example removes the notepad application process from the sleepless exclusion list:</p> <pre>nightwatchman -selistdel=notepad.exe</pre>
selistfrom	<p>Adds sleepless exclusions to the sleepless exclusions list from a named file. The specified file must contain a list of process names with one name to each line in the file.</p> <p><b>Note: this command line option clears any existing items in the sleepless exclusions list before adding the new items from the file.</b></p> <p>For example the following shows the contents of a sleepless exclusions file called <i>myprocesses.txt</i> with three processes set:</p> <pre>notepad.exe iexplore.exe myprocess.exe</pre> <p>This file would then be loaded into the NightWatchman sleepless exclusion list with the following command-line:</p> <pre>nightwatchman -selistfrom=myprocesses.txt</pre>
selistshow	Displays the currently set sleepless exclusion list
settings	Displays the current NightWatchman service configuration parameters on the command line. This switch is now identical to the <i>-summary</i> switch

shutdownaction	<p>Determines the shutdown type. This switch takes one of the values described in the following table:</p> <table border="1" data-bbox="639 264 1423 855"> <thead> <tr> <th>Value</th> <th>Description</th> </tr> </thead> <tbody> <tr> <td>Hibernate</td> <td>This value sets NightWatchman to put the machine into hibernate mode</td> </tr> <tr> <td>Standby</td> <td>This value sets NightWatchman to put the machine into standby mode</td> </tr> <tr> <td>Logoff</td> <td>Performs the log-off action only. No shut down performed. The machine will be left at the log-on prompt. This action has no power management value but can be used to enforce security</td> </tr> <tr> <td>Normal</td> <td>The system will shut down and poweroff</td> </tr> <tr> <td>Poweroff</td> <td>The system will shut down and poweroff, this is a synonym for <i>Normal</i></td> </tr> <tr> <td>Reboot</td> <td>The system will be restarted. This action has no power management value other than to enforce a good housekeeping practice of a daily reboot</td> </tr> </tbody> </table> <p>The default value for this switch is <i>Normal</i></p>	Value	Description	Hibernate	This value sets NightWatchman to put the machine into hibernate mode	Standby	This value sets NightWatchman to put the machine into standby mode	Logoff	Performs the log-off action only. No shut down performed. The machine will be left at the log-on prompt. This action has no power management value but can be used to enforce security	Normal	The system will shut down and poweroff	Poweroff	The system will shut down and poweroff, this is a synonym for <i>Normal</i>	Reboot	The system will be restarted. This action has no power management value other than to enforce a good housekeeping practice of a daily reboot								
Value	Description																						
Hibernate	This value sets NightWatchman to put the machine into hibernate mode																						
Standby	This value sets NightWatchman to put the machine into standby mode																						
Logoff	Performs the log-off action only. No shut down performed. The machine will be left at the log-on prompt. This action has no power management value but can be used to enforce security																						
Normal	The system will shut down and poweroff																						
Poweroff	The system will shut down and poweroff, this is a synonym for <i>Normal</i>																						
Reboot	The system will be restarted. This action has no power management value other than to enforce a good housekeeping practice of a daily reboot																						
shutdowndays	<p>Sets the days of operation as a range or a set of integers. The default is that all days are on.</p> <p>The following table shows the values for the days of the week:</p> <table border="1" data-bbox="639 1048 1423 1422"> <thead> <tr> <th>Day</th> <th>Value</th> </tr> </thead> <tbody> <tr> <td>Sunday</td> <td>0</td> </tr> <tr> <td>Monday</td> <td>1</td> </tr> <tr> <td>Tuesday</td> <td>2</td> </tr> <tr> <td>Wednesday</td> <td>3</td> </tr> <tr> <td>Thursday</td> <td>4</td> </tr> <tr> <td>Friday</td> <td>5</td> </tr> <tr> <td>Saturday</td> <td>6</td> </tr> </tbody> </table> <p>There are two formats this switch can use. These are described in the following table:</p> <table border="1" data-bbox="639 1512 1423 1877"> <thead> <tr> <th>Value</th> <th>Description</th> </tr> </thead> <tbody> <tr> <td>d1-d2 (0-6)</td> <td>Defines a range of days. For example, to set a range from Monday to Friday, you would enter the following command line: <code>nightwatchman -shutdowndays=1-5</code></td> </tr> <tr> <td>d1,dn...,dx</td> <td>Defines a set of days. For example, to allow a shutdown on Monday, Tuesday and Thursday only, you would enter the following command line: <code>nightwatchman -shutdowndays=1,2,4</code></td> </tr> </tbody> </table> <p>After a default installation NightWatchman is set to operate 7 days a week</p>	Day	Value	Sunday	0	Monday	1	Tuesday	2	Wednesday	3	Thursday	4	Friday	5	Saturday	6	Value	Description	d1-d2 (0-6)	Defines a range of days. For example, to set a range from Monday to Friday, you would enter the following command line: <code>nightwatchman -shutdowndays=1-5</code>	d1,dn...,dx	Defines a set of days. For example, to allow a shutdown on Monday, Tuesday and Thursday only, you would enter the following command line: <code>nightwatchman -shutdowndays=1,2,4</code>
Day	Value																						
Sunday	0																						
Monday	1																						
Tuesday	2																						
Wednesday	3																						
Thursday	4																						
Friday	5																						
Saturday	6																						
Value	Description																						
d1-d2 (0-6)	Defines a range of days. For example, to set a range from Monday to Friday, you would enter the following command line: <code>nightwatchman -shutdowndays=1-5</code>																						
d1,dn...,dx	Defines a set of days. For example, to allow a shutdown on Monday, Tuesday and Thursday only, you would enter the following command line: <code>nightwatchman -shutdowndays=1,2,4</code>																						
shutdownmsg	This switch lets you customise the NightWatchman shutdown																						

	<p>message. The maximum length for a message is 79 characters. By default the text of the message varies according to the currently set <i>shutdownaction</i>.</p> <p><b>Note: the countdown message will only appear if <i>countdownsecs</i> is non-zero.</b></p> <p>Setting a value for <i>shutdownmsg</i> replaces all messages with a single custom message.</p> <p>The following shows some example text set:</p> <pre>nightwatchman -shutdownmsg="ACME Inc: saving energy"</pre>								
shutdownnow	<p>Implements an immediate shutdown, regardless of the setting for the <i>shutdownaction</i> switch, depending on the value of the <i>countdownsecs</i>, <i>shutdownmsg</i> and <i>logoffaction</i> switches.</p> <p>Any other switches on the same command-line will abort the shutdown and report an error. The switch settings will only apply to the current operation and will not affect the global settings.</p> <p><b>Note: this switch disables retries and consequently the <i>retryattempts</i> and <i>retryinterval</i> switch settings.</b></p> <p><b>Note: if <i>useractivitymaxidlemins</i> is set to anything other than 0, shutdownnow on its own will not work when run from a local command-line. Adding the <i>-logoffaction=force</i> option will allow the shutdown to work, as will initiating shutdown from the NightWatchman system tray menu.</b></p> <p>If you want to force the shutdown you can use the following command line:</p> <pre>nightwatchman -shutdownnow -logoffaction=force</pre> <p><b>Note: if the <i>logoffaction</i> switch is set to passive no action will take place.</b></p> <p><b>Note: if a computer is already in standby or hibernate it will not be woken to shut it down.</b></p>								
shutdownonce	<p>This switch has been made obsolete. Please see the new <i>onceoff</i> switch for approximately equivalent behaviour</p>								
shutdowntime	<p>Schedules the time of the shutdown.</p> <p><b>Note: because <i>shutdowntime</i> utilizes the scheduler it takes the current <i>shutdowndays</i> settings into account and only initialises a shutdown on days that are set. This includes the case where <i>shutdowntime=NOW</i> is used in conjunction with the <i>-onceoff</i> switch.</b></p> <p>This switch can take the following values:</p> <table border="1" data-bbox="639 1626 1426 2020"> <thead> <tr> <th>Value</th> <th>Description</th> </tr> </thead> <tbody> <tr> <td>HH:mm</td> <td>Time of shutdown in 24 hour format. For example, the following sets the shutdown time to 7:30PM: <pre>nightwatchman -shutdowntime=19:30</pre></td> </tr> <tr> <td>NOW</td> <td>This value can only be used when the <i>shutdowntime</i> switch is used in conjunction with the <i>-onceoff</i> switch. It triggers an action to occur in 90 seconds of running the command. You can control the behaviour using the <i>logoffaction</i>, <i>countdownsecs</i> and <i>shutdownmsg</i> switches.</td> </tr> <tr> <td>OFF</td> <td>No shutdown scheduled.</td> </tr> </tbody> </table>	Value	Description	HH:mm	Time of shutdown in 24 hour format. For example, the following sets the shutdown time to 7:30PM: <pre>nightwatchman -shutdowntime=19:30</pre>	NOW	This value can only be used when the <i>shutdowntime</i> switch is used in conjunction with the <i>-onceoff</i> switch. It triggers an action to occur in 90 seconds of running the command. You can control the behaviour using the <i>logoffaction</i> , <i>countdownsecs</i> and <i>shutdownmsg</i> switches.	OFF	No shutdown scheduled.
Value	Description								
HH:mm	Time of shutdown in 24 hour format. For example, the following sets the shutdown time to 7:30PM: <pre>nightwatchman -shutdowntime=19:30</pre>								
NOW	This value can only be used when the <i>shutdowntime</i> switch is used in conjunction with the <i>-onceoff</i> switch. It triggers an action to occur in 90 seconds of running the command. You can control the behaviour using the <i>logoffaction</i> , <i>countdownsecs</i> and <i>shutdownmsg</i> switches.								
OFF	No shutdown scheduled.								

	The default value for this switch is <i>OFF</i>						
spoolerdirectory	<p>Sets the location of the spooler directory, where NightWatchman Management Center Reporting messages are stored before being sent to the NightWatchman Management Center Web Service</p> <p>By default this is set to:</p> <pre>ALLUSERSPROFILE%\Application Data\IE\Reporting\Nightwatchman\</pre> <p>This switch, set by the installer, modifies the settings for communicating with the NightWatchman Management Center Reporting and should not need to be modified under normal circumstances</p>						
standbyac	<p>Set the computer to switch to standby after a specified number of minutes of system idle time when the computer is running on mains power.</p> <p>A value of zero turns this power management option off</p> <p>The default value for this switch is 60 minutes</p>						
standbydc	<p>Set the computer to switch to standby after a specified number of minutes of system idle time when the computer is running on battery power.</p> <p>A value of zero turns this power management option off</p> <p>The default value for this switch is 5 minutes</p>						
standbynow	Puts the PC into standby mode. This switch works in conjunction with the <i>countdownsecs</i> and <i>shutdownmsg</i> switches. Any other switches on the same command-line will abort the standby operation and report an error. The switch settings will only apply to the current operation and will not affect the global settings						
start	<p>This is a NightWatchman service switch</p> <p>Starts the NightWatchman service as a one-shot or autostart</p> <table border="1"> <thead> <tr> <th>Value</th> <th>Description</th> </tr> </thead> <tbody> <tr> <td>&lt;no value&gt;</td> <td>Start the service once.</td> </tr> <tr> <td>auto</td> <td>Set the service to autostart.</td> </tr> </tbody> </table>	Value	Description	<no value>	Start the service once.	auto	Set the service to autostart.
Value	Description						
<no value>	Start the service once.						
auto	Set the service to autostart.						
stop	<p>This is a NightWatchman service switch</p> <p>Stops the NightWatchman service if running</p>						
summary	Displays the current NightWatchman service configuration parameters on the command line. This switch is identical to the <i>settings</i> switch						
systemtray	<p>Controls the display of the system tray applet.</p> <table border="1"> <thead> <tr> <th>Value</th> <th>Description</th> </tr> </thead> <tbody> <tr> <td>ON</td> <td>Displays system tray applet. <b>Note a setting of ON1 displays the system tray applet but disables the Keep Active option on the system tray menu.</b></td> </tr> <tr> <td>OFF</td> <td>Removes system tray applet.</td> </tr> </tbody> </table> <p>The default value for this switch is <i>ON</i></p>	Value	Description	ON	Displays system tray applet. <b>Note a setting of ON1 displays the system tray applet but disables the Keep Active option on the system tray menu.</b>	OFF	Removes system tray applet.
Value	Description						
ON	Displays system tray applet. <b>Note a setting of ON1 displays the system tray applet but disables the Keep Active option on the system tray menu.</b>						
OFF	Removes system tray applet.						
useractivitymaxidlemins	Set the length in minutes for the window that governs the recent user activity test. If the user has been active during the specified period prior to a NightWatchman scheduled shutdown the shutdown						

	<p>will be postponed.</p> <p>This switch must be set to a value between 0 and 1440 (24 hours) inclusive. A value of 0 disables the feature</p> <p>The postponement time is governed by the NightWatchman <i>retryinterval</i> switch setting</p> <p><b>Note: this switch does not affect shutdowns started from the system tray or those where the NightWatchman <i>logoffaction=Force</i>.</b></p> <p>For example, the following command line sets the user activity window to 20 minutes:</p> <pre>nightwatchman -useractivitymaxidlemins=20</pre> <p>The default value for this switch is 0</p>
version	<p>Displays the NightWatchman product version number. You will need the version number when contacting 1E support</p>
waitminutesforunavailableserver	<p>Sets the number of minutes to wait before the spooler will retry connecting to the NightWatchman Management Center Web Service</p> <p>By default this is set to 1440 minutes</p> <p>This switch, set by the installer, modifies the settings for communicating with NightWatchman Management Center Reporting and should not need to be modified under normal circumstances</p>

## Section 7 The end-user interface







This section describes how to use the end-user interface. When installed the NightWatchman icon will appear in the system tray connected to the application bar.

### 7.1 The NightWatchman system tray icon

The NightWatchman system tray icon indicates the current overall state of the NightWatchman application. This icon shows whether a shutdown has been scheduled or not and displays when the shutdown has been deferred. Additionally the icon shows when backups have been made.

The following table shows the six possible states for the NightWatchman system tray icon.

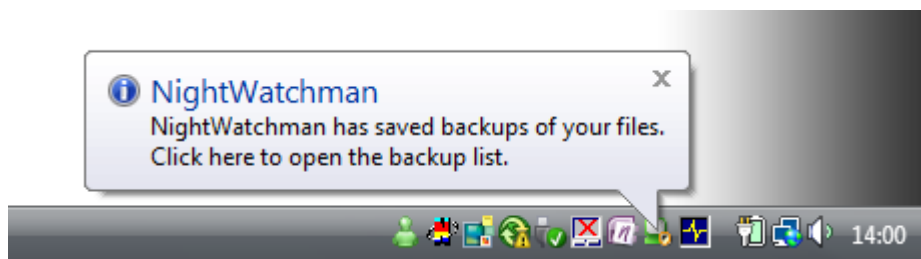
**Table 13 - The NightWatchman system tray icon images**

NightWatchman state	Standard icon	Backup List Notification
No scheduled shutdown		
Scheduled shutdown on		
Shutdown deferred		

### 7.2 NightWatchman backups are present

When NightWatchman backups have been made the NightWatchman system tray icon will display a notification the next time a user logs onto the machine. This notification is shown in *Figure 5*.

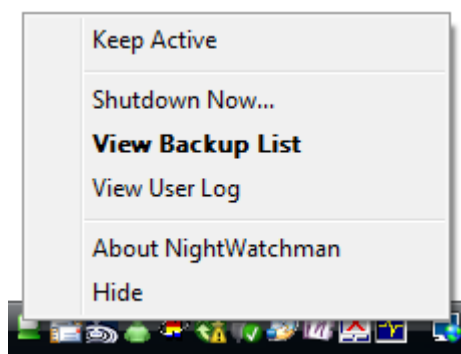
**Figure 5 - The system tray backup notification**



### 7.3 The NightWatchman system tray menu

Right-clicking on the NightWatchman icon displays a menu that enables the user to interact with NightWatchman. The system tray menu is shown in *Figure 6*.

**Figure 6 - The NightWatchman system tray menu**



Each of the NightWatchman menu options is described in turn in the following headings.

## 7.4 Keep Active

Selecting this option keeps the system free from NightWatchman power down events for a period of time. When the option is selected the user is prompted by a *NightWatchman Keep Active* dialog to choose the period of time to keep active for. This option can be useful when deadlines are imminent and the machine is liable to be used out of normal office hours, or when a particular running task will take a long time to complete.

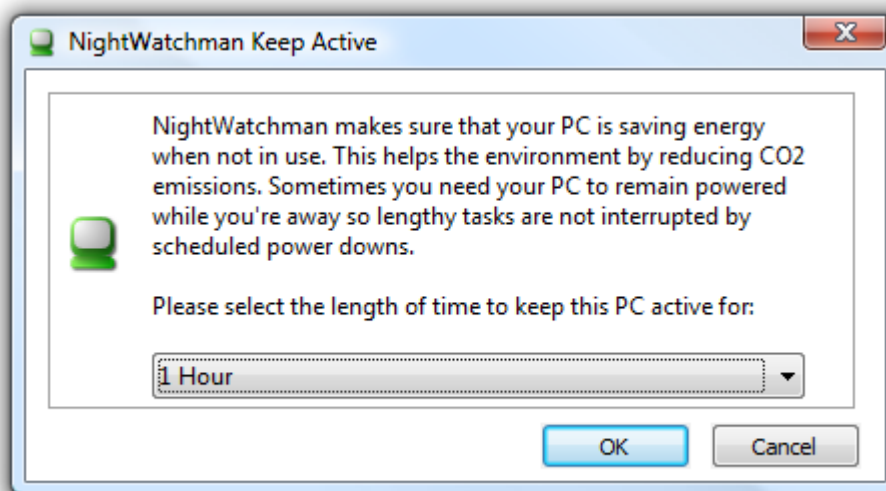
**Note: Keep Active only works while the user that requested it is still logged on to the OS, as soon as they log off NightWatchman will revert to its default behaviour.**

**Note: Keep Active does not work for NightWatchman events where the *logoffaction* is set to force or where the user actively chooses the *Shutdown Now...* menu option.**

### The NightWatchman Keep Active dialog

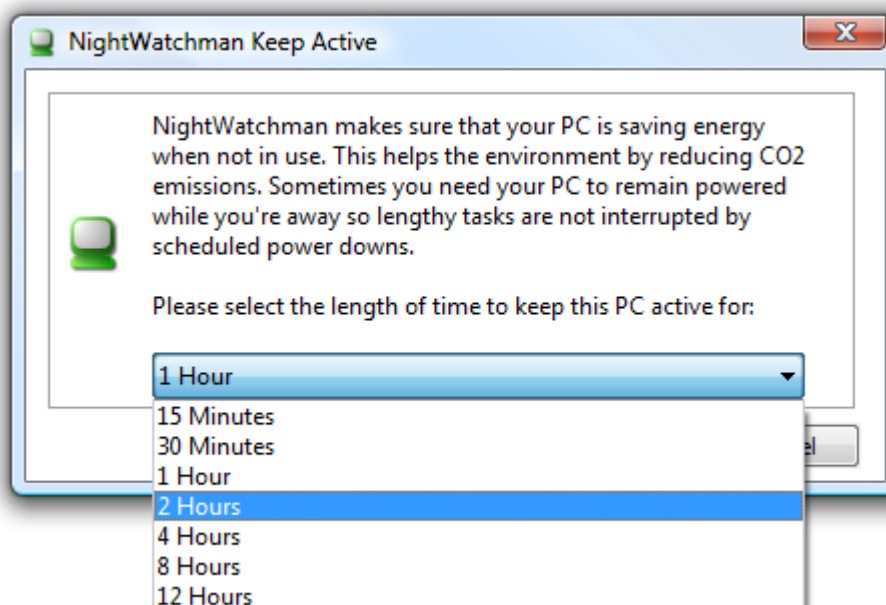
The default time for the *Keep Active* dialog is 1 hour, as shown in *Figure 7*.

**Figure 7 - The default Keep Active time**



In the dialog you can select a different keep active time by selecting from the drop down menu, as shown in *Figure 8*

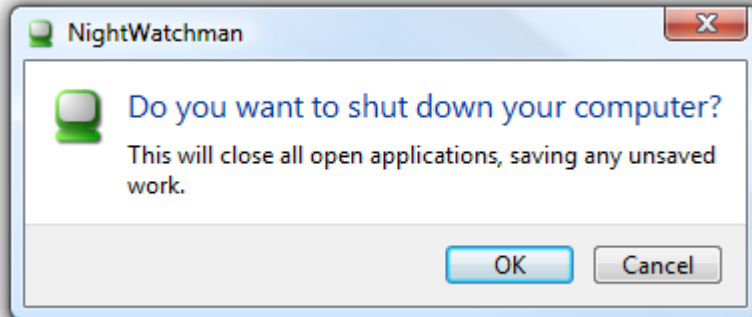
**Figure 8 - Selecting a new keep active period**



## 7.5 Shutdown Now...

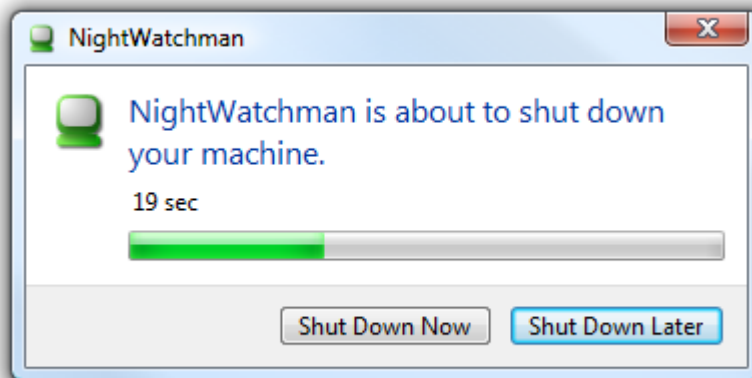
Selecting this option initiates an immediate shutdown. The user will be presented with the message, *This will close all open applications, saving any unsaved work*, as shown in *Figure 7*, with the option to allow the user to *OK* or cancel the shutdown operation.

**Figure 9 - The NightWatchman shutdown notification**



If the user selects *OK*, the NightWatchman countdown dialog will appear with the currently set countdown started, as shown in *Figure 8*. Requesting the shutdown in this way will also automatically close supported applications and save any work in progress.

**Figure 10 - The NightWatchman countdown dialog**



**Note:** the logged on user still has the option to interact with the machine during the countdown period, allowing them to close applications or save documents up until the countdown timer expires.

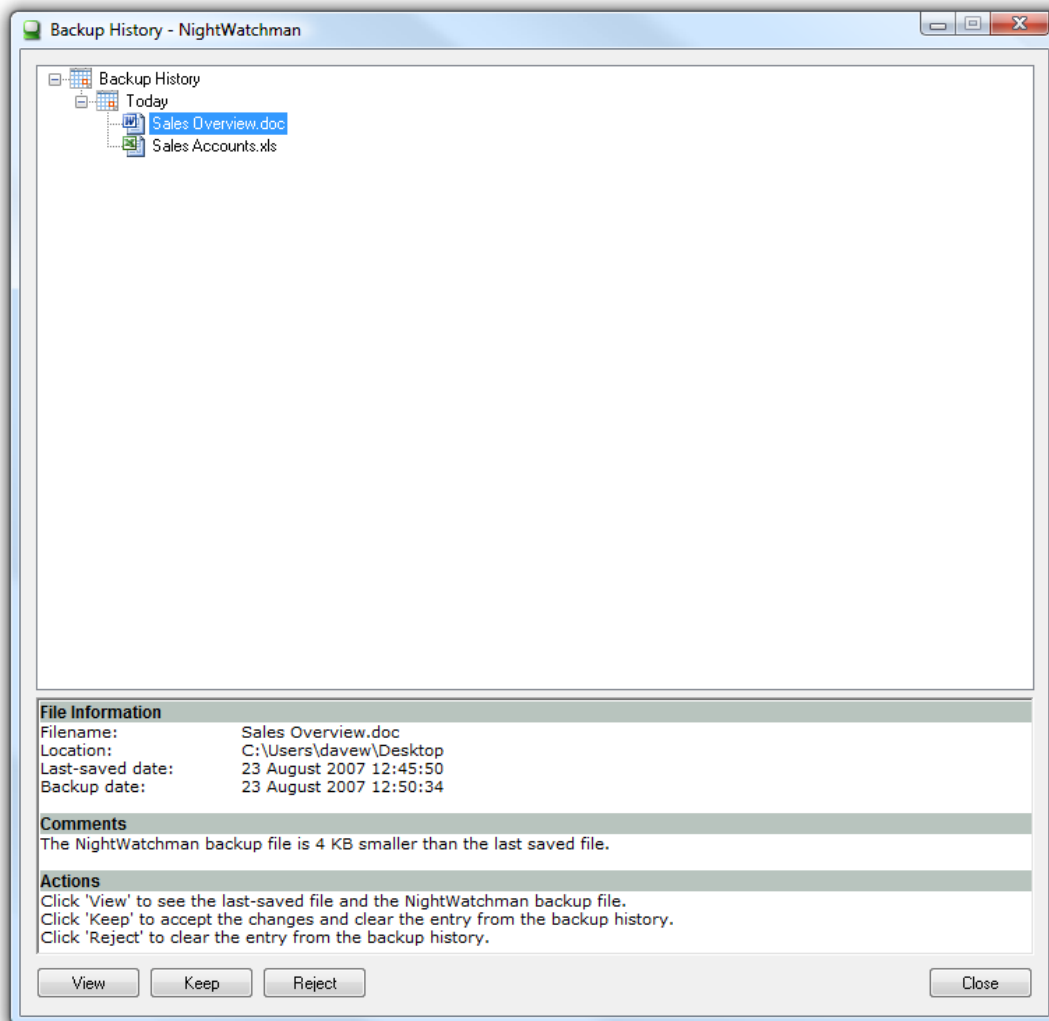
## 7.6 View Backup List

This option is used when a shutdown has occurred and documents have been saved automatically by NightWatchman. When selected, the *NightWatchman Backup List* appears, allowing the end-user to view and interact with a history of the NightWatchman backed-up files.

The NightWatchman Backup List contains two main fields:

- **Backup history:** - this field contains a date ordered history of the NightWatchman backed up files.
- **Information:** - this field shows details for the back-up file currently selected.

There are also three buttons at the bottom of the dialog (*View*, *Keep* and *Reject*) that allow you to interact with the NightWatchman backup files and make decisions about whether to keep the changes or not. The *NightWatchman Backup Dialog* is shown in *Figure 9*.

**Figure 11 - The NightWatchman Backup List Dialog**

### Backups of new or previously saved files

There are two possibilities to consider when dealing with NightWatchman backup files. The usual case is where a file that has been previously saved was in the process of being edited when the shutdown occurred. The other case is where a new file was being edited that had not yet been saved.

In the case of backups of previously saved files there are two files to deal with: the last saved file and the NightWatchman backup file. You deal with the backups using the buttons in the *Changes* section of the dialog. The following table shows the actions of the buttons in this case:

**Table 14 - Button actions on previously saved files**

Button	Description
View	Opens both files allowing the changes to be reviewed before making a decision about whether to keep or reject them. <b>Note: You should close both the last saved file and the NightWatchman backup file before selecting either the <i>Keep</i> or <i>Reject</i> buttons.</b>
Keep	Replaces the last user-saved file with the NightWatchman backup and clears the entry from the <i>Backup History</i> : field.
Reject	Removes the NightWatchman backup leaving the last user-saved file intact and clears the entry from the <i>Backup History</i> : field.

In the case of backups of new files there is just the one file to deal with, the NightWatchman backup file. The following table shows the actions of the buttons in this case:

**Table 15 - Button actions for new files**

Button	Description
View	Opens the file allowing the changes to be reviewed before making a decision about whether to keep or reject them. <b>Note: You should close the NightWatchman backup file before selecting either the Keep or Reject buttons.</b>
Keep	Displays the system <i>Save As</i> dialog, allowing the file to be saved in a user determined location and name. The entry is removed from the <i>Backup History:</i> field.
Reject	Removes the NightWatchman backup and clears the entry from the <i>Backup History:</i> field.

### Backup information

The *Information:* field provides details for the selected backup to help with the decision about whether to keep or reject the saved changes. The following information is provided:

- The root name for the file.
- The path of the last saved version of the file (this will not be applicable for new files that had not been previously saved).
- The relative sizes of the last saved version and the NightWatchman backup of the file (if applicable).
- A comparison of the dates of the last saved version and the NightWatchman backup of the file (if applicable). This will also be presented as a warning if the last saved version is more recent than the NightWatchman backup.
- A summary of the actions that can be performed for the backup. This provides a quick reference for the information shown in the two following tables.

For example, suppose a Sales Accounts file called *Sales Accounts.xls* was open for editing during a NightWatchman shutdown and that the following morning the user came in, edited and saved the original file. The following shows an example of how the NightWatchman backup information field might appear in this case:

**Figure 12 - Example NightWatchman backup information**

#### File Information

Filename:	Sales Accounts.xls
Location:	C:\Users\davew\Desktop
Last-saved date:	23 August 2007 11:29:05
Backup date:	22 August 2007 18:50:37

#### Comments

The NightWatchman backup file is the same size as the last saved file.  
**Warning! The NightWatchman backup file is older than the last saved file.**

#### Actions

Click 'View' to see the last-saved file and the NightWatchman backup file.  
Click 'Keep' to accept the changes and clear the entry from the backup history.  
Click 'Reject' to clear the entry from the backup history.

### Working with NightWatchman backups

Table 8 shows the six states of the NightWatchman system tray icon. When no backups have been made, or there are backups that have been checked, the icon will appear as shown in the second column. When a NightWatchman file backup has taken place an additional overlay (a black arrow on an orange circle) will appear on the icon, as shown in the third column of Table 8 on Page 36. When the user sees this icon they should open the *Backup History* dialog. This dialog shows which files have been affected by the shutdown.

The most recent backups will be towards the top of the *Backup History* tree. This tree is sorted into separate dates and each date can be expanded separately. This allows you to see immediately which backups occurred on a particular date.

Once a date has been expanded, you can select the individual backup entries. Doing this displays information that helps to determine whether to keep the changes held in a particular backup. For example, you might see in the information field that the file size of the backup is smaller than the last saved version of the file; this indicates that some of the file had been edited to remove some of the contents when the backup occurred. This information may influence your judgement on whether to keep the changes or not.

A more significant warning occurs when the NightWatchman backup file has an older date than the last saved file. This information is vital when assessing what to do with the changes as you should consider the fact that the changes were made to a document prior to the one currently saved.

As a final check, the last saved file and the NightWatchman backup file can be opened using the *View* button. You can then evaluate the changes directly to see if they are worth keeping.

If, once the changes have been checked, the decision is made to keep the backup in preference to the last saved version, click the *Keep* button. If it is decided that the changes stored in the backup are not worth keeping, click the *Reject* button. In both cases this will remove the backup entry from the backup history.

**Note: You should close both the last saved file and the NightWatchman backup file before selecting *Keep* or *Reject* buttons.**

## 7.7 View User Log

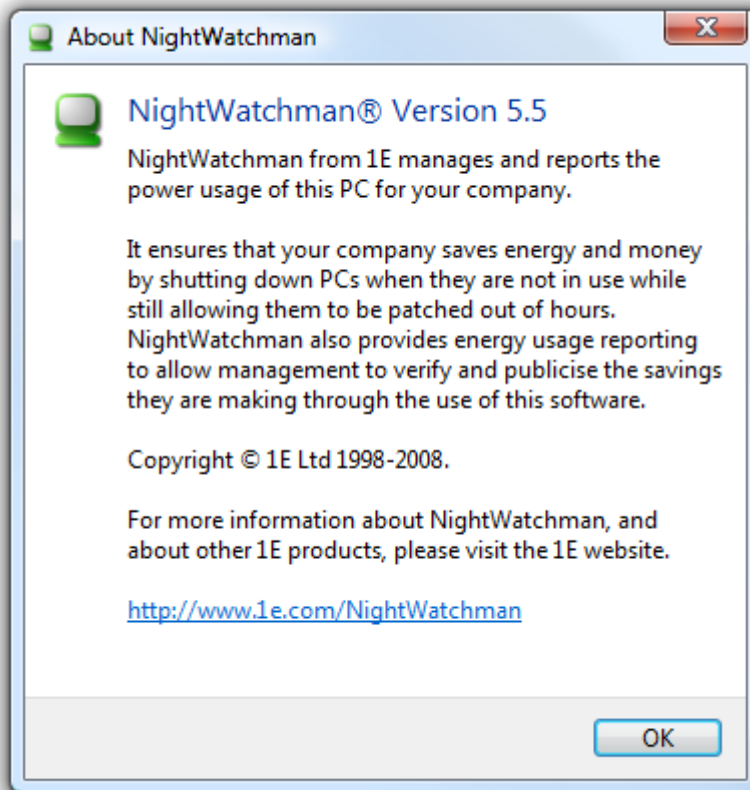
This option displays the User Log dialog. The user log provides a summarised account of the recent actions performed by NightWatchman. For example, this log shows at what time NightWatchman performed a successful shutdown and provides a one-line summary of any errors that were encountered.

Administrators can access a more detailed log file if needed; details on the location of this file can be found using the *settings* command line switch as documented in Table 7 - *The NightWatchman switch reference* on Page 31.

## 7.8 About NightWatchman

This option displays information about the NightWatchman service.

**Figure 13 - The About NightWatchman dialog**



## Section 8 Beyond The NightWatchman Administrator's Guide

This guide provides details on configuring the NightWatchman service to perform scheduled shutdowns and manage users who are logged on at the time of shutdown. You may also need to create additional scripts to augment the default set provided with the NightWatchman installation. The elements required to create scripts are documented in *The NightWatchman Scripting Guide*.

In this section we describe how NightWatchman works together with 1E WakeUp.

### 8.1 How does NightWatchman work with ConfigMgr and 1E WakeUp?

NightWatchman can work in collaboration with 1E WakeUp to achieve 100% software distribution success and maximum power saving.

NightWatchman is a stand-alone product, needing only power management to be enabled on the machine. However, in conjunction with 1E WakeUp, NightWatchman can add real benefit to SMS/ConfigMgr. 1E WakeUp is used to ensure that PCs are started up for a scheduled software distribution. NightWatchman ensures that all the awoken PCs are shut down to ensure minimum power usage.

Here we describe an example scenario that shows the interaction between 1E WakeUp and NightWatchman. The intention is to send an Advertisement to install new software during the night. On the left-hand side are machines on a subnet with both 1E WakeUp and NightWatchman installed. Two of the machines on the subnet are off and two are on. The Main 1E WakeUp Agent wakes up the machines that are off by sending a Magic Packet on the subnet, as shown in *Figure 12*.

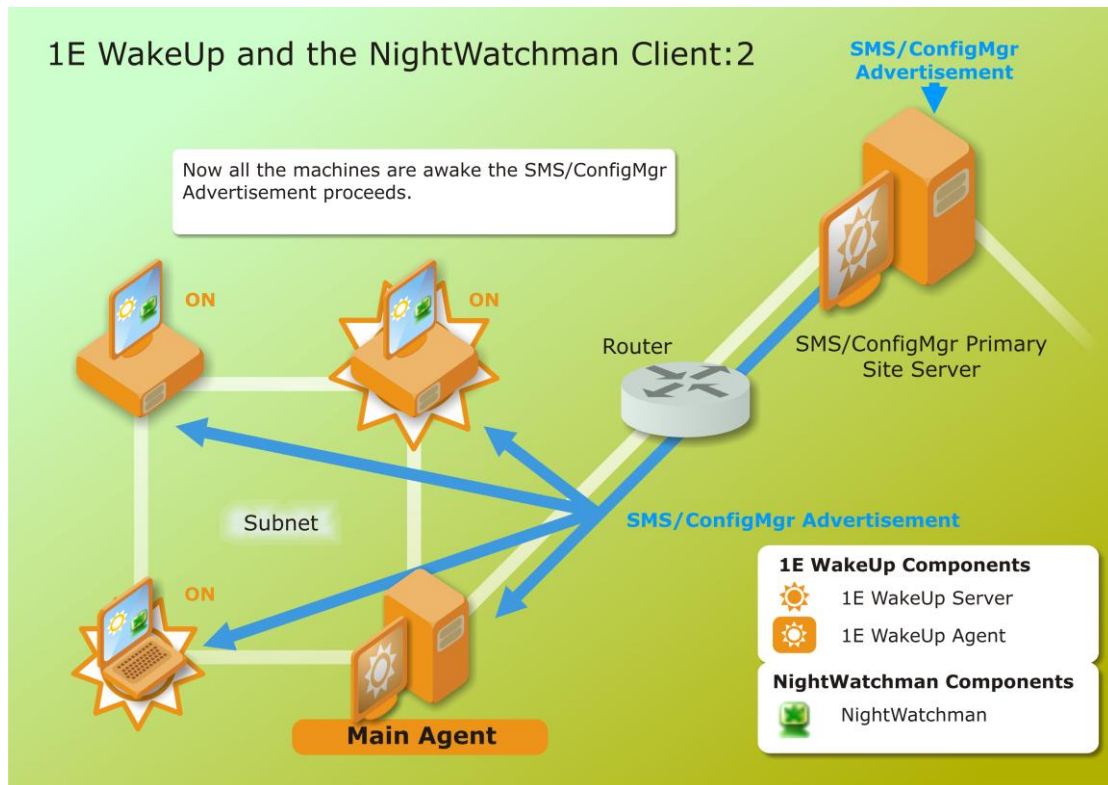
**Figure 14 - 1E WakeUp wakes machines in response to SMS/ConfigMgr Advertisement**



The subnet and the newly awakened machines are now in a state ready to receive the SMS/ConfigMgr Advertisement, as shown in *Figure 13*.

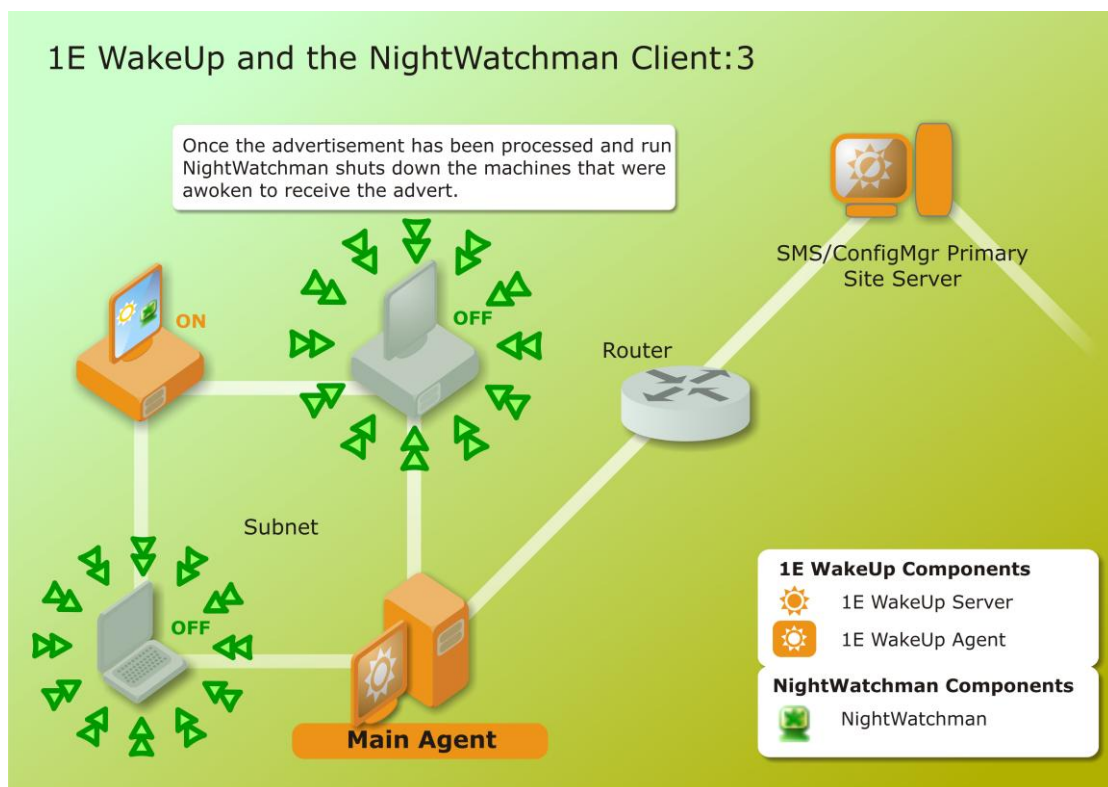
**Note: if the Advertisement requires a reboot to process the installation this can be managed by NightWatchman to save any open documents.**

**Figure 15 - The SMS/ConfigMgr Advertisement proceeds**



Once the Advertisement has been processed and run NightWatchman shuts down just the machines that were awoken to process the Advert, as shown in *Figure 14*, to ensure that energy savings are maximised while still enabling the network to be easily patched, upgraded or distributed to.

**Figure 16 - NightWatchman shuts down the recently awoken machines**



## Section 9 Troubleshooting

When troubleshooting problems with NightWatchman you should first check that the system meets the requirements detailed in *Section 2 - Requirements* of the *NightWatchman Installation Guide*. If the requirements are met you should then follow through the process for creating a problem report to send to the 1E technical support team as shown below.

### 9.1 Checking the problem

Before contacting 1E technical support with a problem you should check the following:

- Make sure that the minimum requirements have been met.
- Make sure that the problem is reproducible after a machine reboot (if possible) or after stopping and restarting the service.
- Read the readme.txt file included with the NightWatchman installation. This includes late breaking news, and details on known issues.

### 9.2 Contact 1E Technical Support

Before contacting the technical support department at 1E please check out the troubleshooting page on the 1E website at the following location

<http://www.1e.com/Support/Nightwatchman-TroubleShooting.aspx>

If following the troubleshooting steps on the 1E website does not help, the next step should be to contact the 1E support department. To help 1E determine the solution quickly, you should create a technical report of the problem according to the steps described below.

#### Creating a technical report

The technical report should contain the following information:

- The NightWatchman log file.
- Version number of NightWatchman.
- The OS, version number and patch level the machine is running.
- Which type of power management is available on the client machine?

To help determine the cause of technical problems NightWatchman keeps a logfile of all its settings and interactions. This is the main source of information in the technical report. By default this logfile is called *NightWatchman.log* and is located in one of the following directories, depending on which OS you are running.

In Windows Vista this file is located in:

```
C:\ProgramData\1E\Nightwatchman50
```

In Windows XP and Windows 2000 this file is located in:

```
C:\Documents and Settings\All Users\Application Data\1E\Nightwatchman50
```

The version number for NightWatchman can be found using the following NightWatchman command line option:

```
c> nightwatchman -version
```

You should then email the details of the problem encountered along with the above information to [support@1e.com](mailto:support@1e.com). A technical consultant will then contact you to help find a suitable solution.

## Section 10 Further Information

After you have completed the administration of NightWatchman, additional information can be found in *The NightWatchman Scripting Reference*. That guide provides reference information for implementing NightWatchman shutdown scripts.

For more detailed questions about specific situations that may be relevant to your network you are always welcome to contact 1E directly. Our contact details are provided below.

### 10.1 Contact details

1E provide a number of SMS/ConfigMgr enhancement tools as well as consultancy services. This section provides information on how to get information about 1E and contact details for the various departments within 1E.

#### 1E web support

The essential resource for support information about a number of 1E products, including NightWatchman, is the following location on the 1E website.

<http://www.1e.com/Support/index.aspx>

#### Telephone and fax

The following UK numbers are available for telephone and fax enquiries:

Tel: +44 (0)20 8326 3880

Fax: +44 (0)20 8840 9578

The following number is available in the United States of America:

Tel: 1-866 592 4214

#### Post

The postal address for 1E is:

Head Office:  
1E Ltd,  
97-107 Uxbridge Rd,  
London W5 5TL, UK

#### Sales

To contact the sales department at 1E you can use the following email address:

[sales@1e.com](mailto:sales@1e.com)

#### Technical support

Before contacting the technical support department at 1E with any problems you have with NightWatchman be sure to check out *Section 8 Troubleshooting* first.

If you have any other questions relating to NightWatchman or other 1E products please contact support using the following email address:

[support@1e.com](mailto:support@1e.com)

## Appendix A Glossary

The terms contained in this glossary are used throughout this document and are provided here for quick reference.

### A.1 Technical Terms

The following table describes the technical acronyms used in this document.

**Table 16 - Technical acronyms**

<b>Term</b>	<b>Description</b>
ACPI	Advanced Configuration and Power Interface. The successor to APM, ACPI allows the best control over a PC's power settings.
APM	Advanced Power Management. An older standard for controlling a PC's power settings, APM can be problematic in terms of the shutdown and power-off of PC's.
SMS	Systems Management Server. A system from Microsoft for managing Microsoft networks.
ConfigMgr	Microsoft System Center Configuration Manager. The latest version of SMS, a system for managing Microsoft networks.
MSI	Microsoft Installer utility. This Microsoft utility is the basis for installing most current MS applications and a few third party applications. MSI includes many install enhancements such as registry and file tracking.

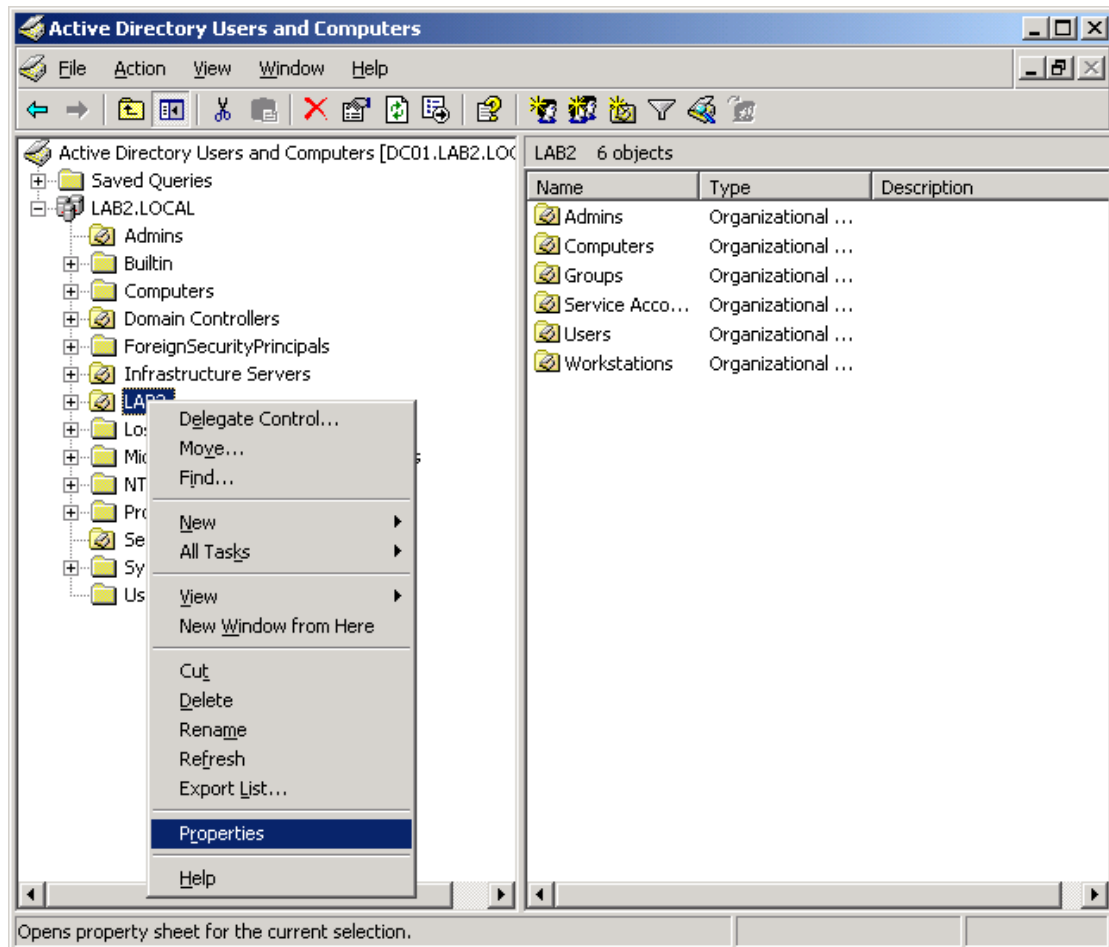
## Appendix B NightWatchman Global Policies

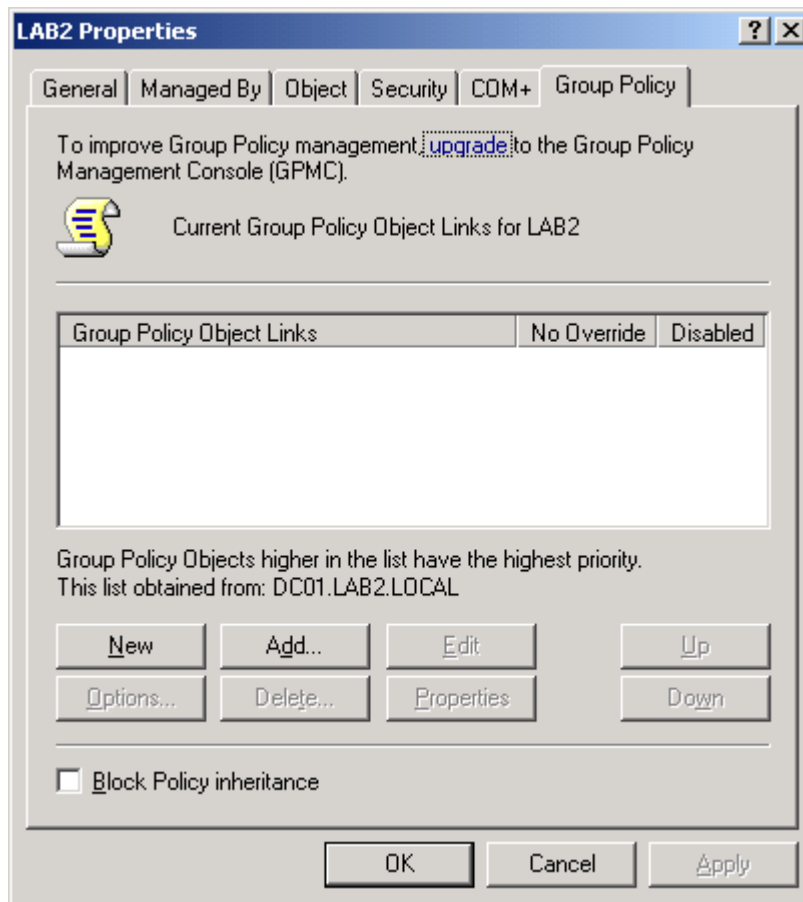
You can set global policies for NightWatchman using Active Directory. To enable this to be done easily the NightWatchman zip file provides an Active Directory group policy template called *1Enwm.adm*.

### B.1 Importing the NightWatchman Group Policy Template

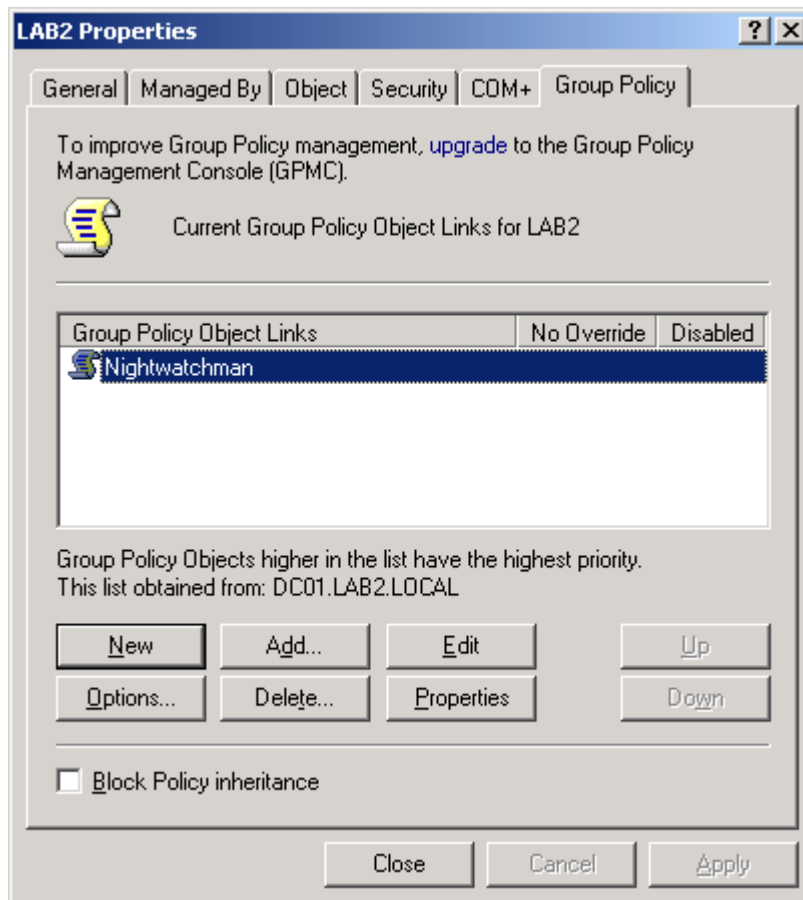
The NightWatchman template can be imported for a particular domain, by right-clicking on the domain in the Active Directory Microsoft Console, as shown in *Figure 15*, selecting Properties from the context menu and clicking on the Group Policy tab in the Properties dialog, as shown in *Figure 16*.

**Figure 17 - Selecting the domain properties**

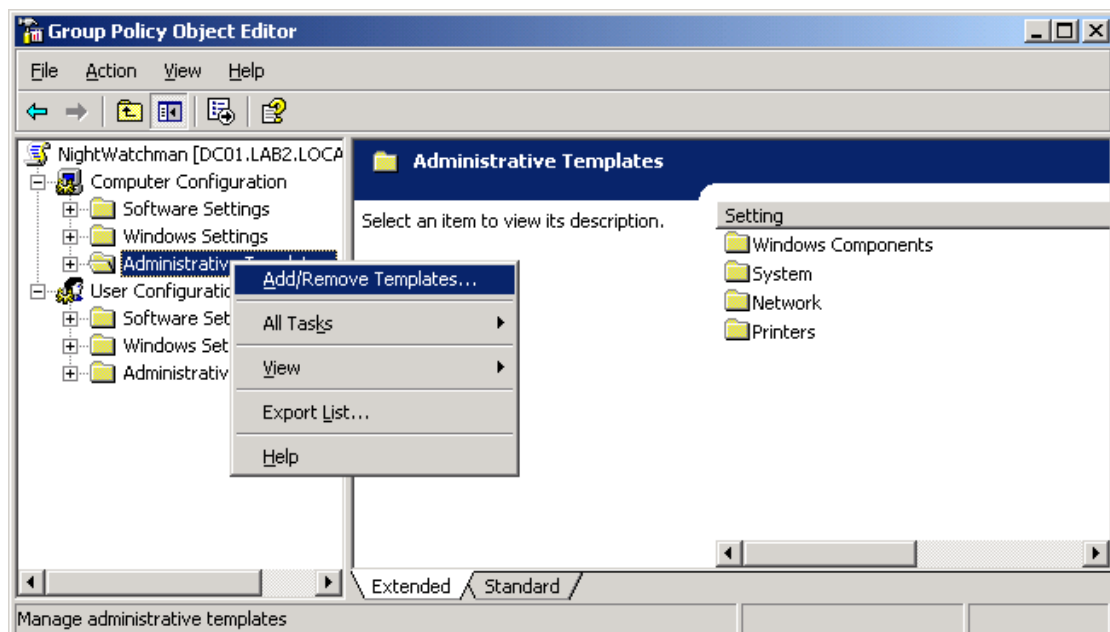


**Figure 18 - The Group Policy tab**

In this tab you click on *New* to add a new Group Policy to hold the template. In the following dialog we have created a Group Policy called NightWatchman.

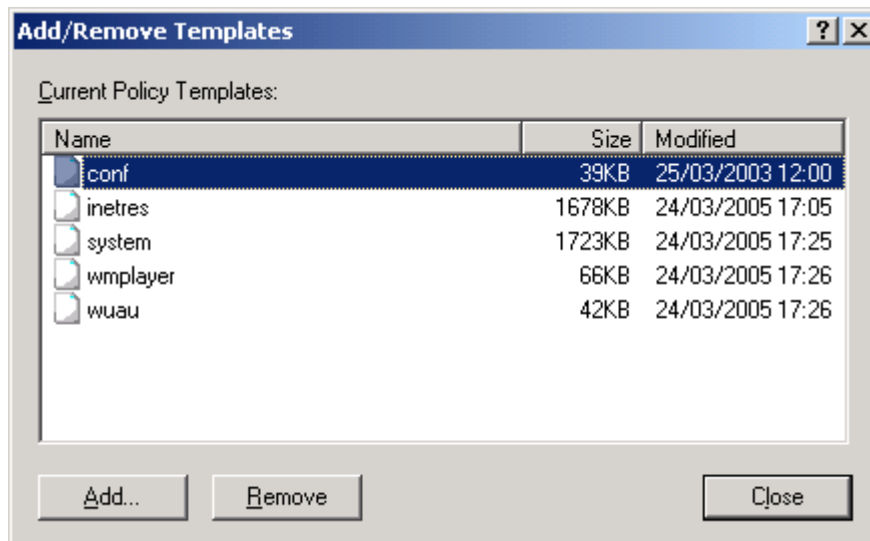
**Figure 19 - Creating the NightWatchman Group Policy**

You then click Edit to display the *Group Policy Object Editor*, right-click on the *Administrative Templates* node and select *Add/Remove Templates...* option from the context menu.

**Figure 20 - Editing the new Group Policy**

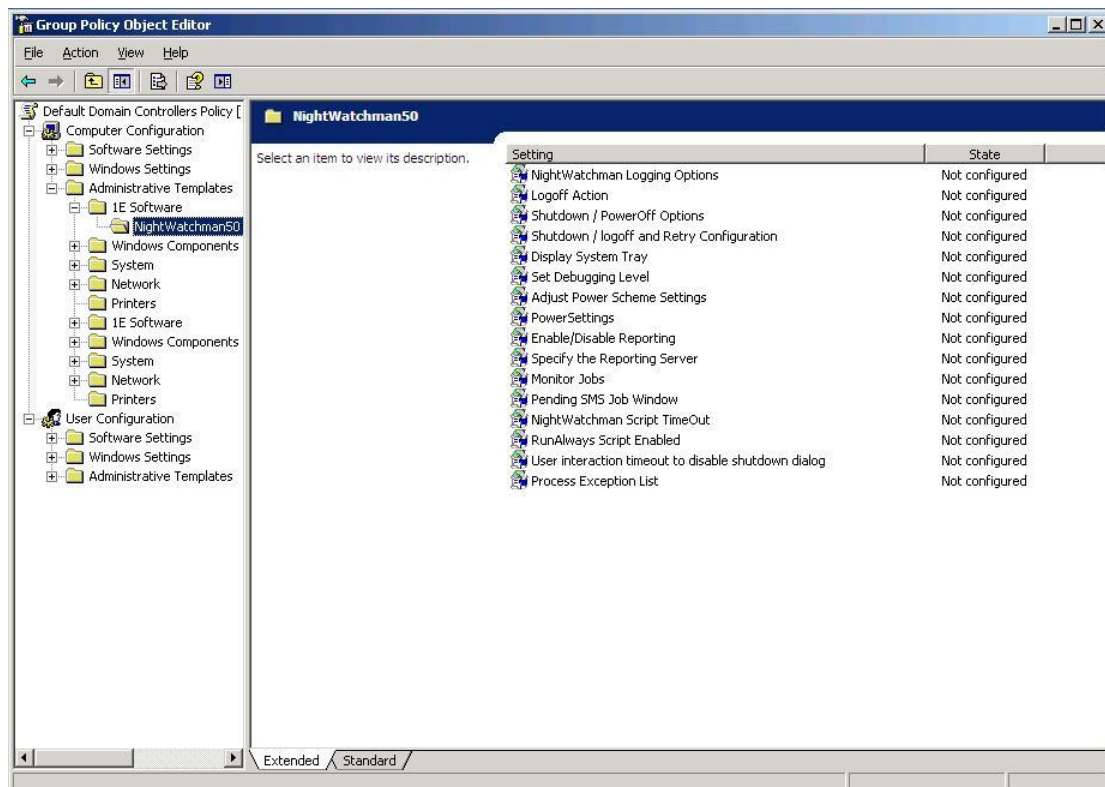
In the *Add/Remove Templates* dialog, shown in *Figure 19*, you click on *Add...* and then navigate to where you have stored the *1Enwm.adm* file, select the file and click *Open*.

**Figure 21 - The Add/Remove Templates dialog**



This imports the NightWatchman group policy settings into the Group Policy object. The result of this is to create a new node below the *Administrative Templates* node called *1E Software*. Below this node is the *Nightwatchman50* node, as shown in *Figure 20*, which contains all the settings that control NightWatchman.

**Figure 22 - The Nightwatchman50 Template node**



Each setting has a description that shows what aspect of NightWatchman functionality will be controlled. *Figure 21* shows the *Adjust Power Scheme Settings* and their description.

**Figure 23 - A NightWatchman Setting**

